



## ZHONGSHAN GUANDING LIGHTING TECHNOLOGY CO.,LTD

📍 Add: No.46 Xinmao Industrial Road, Henglan Town,  
Zhongshan City, Guangdong, China.

☎ Tel/Fax: +86 0760-89865798

✉ E-mail: jasen@zsgdl.com

🌐 [http: www.zsgdl.com](http://www.zsgdl.com)



# GUANDING LIGHTING

**2025**  
**PRODUCT MANUAL**  
[www.zsgdl.com](http://www.zsgdl.com)

## Company Introduction

Established in 2013, Zhongshan GUANDING Lighting Technology Co., Ltd. is a high tech company, specializing in the development, manufacture and marketing of innovative LED commercial lighting products. We have factory lines in Zhongshan city, which occupy more than 10000 square meters and employ more than 100 workers.

GUANDING product line covers LED commercial lighting and out door lighting. Our LED commercial lighting especially panel light has been maintaining a leading position in the LED industry.

We provide innovative products and excellent services by competitive prices. What's more, we provide OEM and ODM service for our customers. As a reliable supplier, GUANDING is creating value for our customers all over the world.

Welcome to join us and let's light up our future together.

## CATALOGUE



**LED PANEL LIGHT • 1-22**



**LED BULB • 23-24**



**LED DOWN LIGHT • 25-26**



**LED FLOOD LIGHT • 27-62**



**LED STREET LIGHT • 63-77**



**LED STADIUM LAMP • 78-80**



**MINING LAMP • 80**

**GUANDING  
LIGHTING**

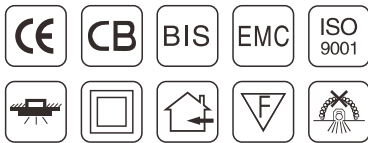




# GUANDING LIGHTING

## LED PANEL LIGHT

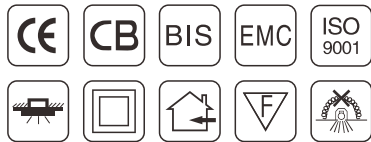
### ULTRATHIN PANEL LIGHT



### SANAN/BRIDGELUX

MODEL	WATT	SIZE	CUT SIZE	LED QTY	LUMEN	PARAMETER
GD-R-3	3W	Ø85mm	Ø75mm	15PCS	180lm	Material: Diecast Aluminium Light source: SMD2835 CCT: 2700K-10000K CRI: 70 or 80 LED Driver: Isolated constant current driver(IC) Input Voltage: AC85-265v 50/60Hz Warranty: 2 years or 3 years
GD-R-4	4W	Ø105mm	Ø95mm	20PCS	240lm	
GD-R-6	6W	Ø120mm	Ø105mm	30PCS	360lm	
GD-R-8	8W	Ø120mm	Ø105mm	40PCS	560lm	
GD-R-9	9W	Ø145mm	Ø130mm	45PCS	630lm	
GD-R-12	12W	Ø170mm	Ø155mm	60PCS	960lm	
GD-R-15A	15W	Ø170mm	Ø155mm	75PCS	1200lm	
GD-R-15	15W	Ø190mm	Ø175mm	75PCS	1200lm	
GD-R-18	18W	Ø220mm	Ø205mm	90PCS	1620lm	
GD-R-22	22W	Ø220mm	Ø205mm	110PCS	1980lm	
GD-R-24	24W	Ø300mm	Ø280mm	120PCS	2040lm	
GD-R-30	30W	Ø300mm	Ø280mm	150PCS	2700lm	
GD-R-32	32W	Ø300mm	Ø280mm	168PCS	2880lm	

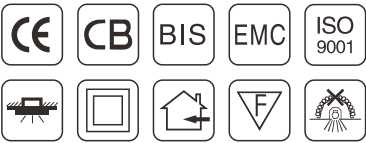
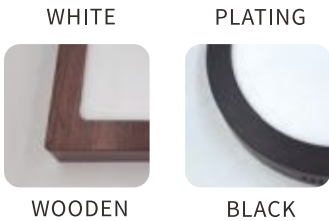
ULTRATHIN PANEL LIGHT



SANAN/BRIDGELUX

MODEL	WATT	SIZE	CUT SIZE	LED QTY	LUMEN	PARAMETER
GD-S-3	3W	85*85mm	75*75mm	15PCS	180lm	Material: Diecast Aluminium Light source: SMD2835 CCT: 2700K-10000K LED Driver: Isolated constant current driver(IC) Input Voltage: AC85-265v 50/60Hz Warranty: 2 years or 3 years
GD-S-4	4W	105*105mm	95*95mm	20PCS	240lm	
GD-S-6	6W	120*120mm	105*105mm	30PCS	360lm	
GD-S-8	8W	120*120mm	105*105mm	40PCS	560lm	
GD-S-9	9W	145*145mm	130*130mm	45PCS	630lm	
GD-S-12	12W	170*170mm	155*155mm	60PCS	960lm	
GD-S-15A	15W	170*170mm	155*155mm	75PCS	1200lm	
GD-S-15	15W	190*190mm	175*175mm	75PCS	1200lm	
GD-S-18	18W	220*220mm	205*205mm	90PCS	1620lm	
GD-S-22	22W	220*220mm	205*205mm	110PCS	1980lm	
GD-S-24	24W	300*300mm	280*280mm	120PCS	2040lm	
GD-S-30	30W	300*300mm	280*280mm	150PCS	2700lm	
GD-S-32	32W	300*300mm	280*280mm	168PCS	2880lm	

SURFACE MOUNTED PANEL



SANAN/BRIDGELUX

MODEL	DESCRIPTION	SIZE	LED QTY	LUMEN	PARAMETER
GD-SR-6	6W	Ø120mm	30PCS	360lm	Material: Diecast Aluminium Light source: SMD2835 CCT: 2700K-10000K CRI: 70 or 80 LED Driver: Isolated constant current driver(IC) Input Voltage: AC85-265v 50/60Hz Warranty: 2 years or 3 years
GD-SR-8	8W	Ø120mm	40PCS	560lm	
GD-SR-12	12W	Ø170mm	60PCS	960lm	
GD-SR-15A	15W	Ø170mm	75PCS	1200lm	
GD-SR-18	18W	Ø220mm	90PCS	1620lm	
GD-SR-22	22W	Ø220mm	110PCS	1980lm	
GD-SR-24	24W	Ø300mm	120PCS	2040lm	
GD-SR-30	30W	Ø300mm	150PCS	2700lm	
GD-SR-32	32W	Ø300mm	168PCS	2880lm	
GD-SS-6	6W	120*120mm	30PCS	360lm	
GD-SS-8	8W	120*120mm	40PCS	560lm	
GD-SS-12	12W	170*170mm	60PCS	960lm	
GD-SS-15A	15W	170*170mm	75PCS	1200lm	
GD-SS-18	18W	220*220mm	90PCS	1620lm	
GD-SS-22	22W	220*220mm	110PCS	1980lm	
GD-SS-24	24W	300*300mm	120PCS	2040lm	
GD-SS-30	30W	300*300mm	150PCS	2700lm	
GD-SS-32	32W	300*300mm	168PCS	2880lm	



## FRAMELESS RECESSED PANEL LIGHT



**SANAN/BRIDGELUX**

MODEL	WATT	SIZE	CUT SIZE	LED QTY	LUMEN	PARAMETER
GD-FR-10	10W	Ø100mm	45-80mm	55PCS	100lm/w	Material: Diecast Aluminium,Stamping Aluminum,Stamping Iron Light source: SMD2835 CCT: 2700K-10000K CRI: 70 or 80 LED Driver: Isolated constant current driver(IC) Input Voltage: AC85-265v 50/60Hz Warranty: 2 years or 3 years
GD-FR-18	18W	Ø120mm	45-110mm	90PCS	100lm/w	
GD-FR-24	24W	Ø170mm	45-160mm	144PCS	110lm/w	
GD-FR-36	36W	Ø220mm	45-210mm	240PCS	110lm/w	
GD-FR-48	48W	Ø300mm	45-280mm	336PCS	110lm/w	
GD-FS-10	10W	100*100mm	45-80mm	55PCS	100lm/w	
GD-FS-18	18W	120*120mm	45-110mm	90PCS	100lm/w	
GD-FS-24	24W	170*170mm	45-160mm	144PCS	110lm/w	
GD-FS-36	36W	220*220mm	45-210mm	240PCS	110lm/w	
GD-FS-48	48W	300*300mm	45-280mm	336PCS	110lm/w	

## FRAMELESS SURFACE PANEL LIGHT



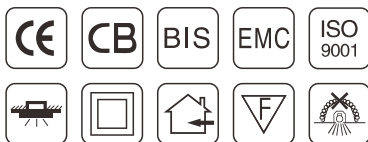
PP cover

All aluminum  
lamp body

**SANAN/BRIDGELUX**

MODEL	WATT	SIZE	LED QTY	LUMEN	PARAMETER
GD-FSR-18	18W	Ø120mm	90PCS	100lm/w	Material: Diecast Aluminium,Stamping Aluminum,Stamping Iron Light source: SMD2835 CCT: 2700K-10000K CRI: 70 or 80 LED Driver: Isolated constant current driver(IC) Input Voltage: AC85-265v 50/60Hz Warranty: 2 years or 3 years
GD-FSR-24	24W	Ø170mm	144PCS	110lm/w	
GD-FSR-36	36W	Ø220mm	240PCS	110lm/w	
GD-FSR-48	48W	Ø300mm	336PCS	110lm/w	
GD-FSS-18	18W	120*120mm	90PCS	100lm/w	
GD-FSS-24	24W	170*170mm	144PCS	110lm/w	
GD-FSS-36	36W	220*220mm	240PCS	110lm/w	
GD-FSS-48	48W	300*300mm	336PCS	110lm/w	

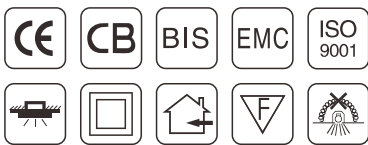
FRAMELESS RECESSED PANEL LIGHT



SANAN/BRIDGELUX

MODEL	WATT	SIZE	CUT SIZE	LED QTY	LUMEN	PARAMETER
GD-FR-10	10W + 10W	Ø100mm	45-80mm	55PCS	100lm/w	Material: Diecast Aluminium,Stamping Aluminum,Stamping Iron Light source: SMD2835 CCT: 2700K-10000K CRI: 70 or 80 LED Driver: Isolated constant current driver(IC) Input Voltage: AC85-265v 50/60Hz Warranty: 2 years or 3 years
GD-FR-18	18W + 18W	Ø120mm	45-110mm	90PCS	100lm/w	
GD-FR-24	24W + 24W	Ø170mm	45-160mm	144PCS	110lm/w	
GD-FR-36	36W + 36W	Ø220mm	45-210mm	240PCS	110lm/w	
GD-FS-10	10W + 10W	100*100mm	45-80mm	55PCS	100lm/w	
GD-FS-18	18W + 18W	120*120mm	45-110mm	90PCS	100lm/w	
GD-FS-24	24W + 24W	170*170mm	45-160mm	144PCS	110lm/w	
GD-FS-36	36W + 36W	220*220mm	45-210mm	240PCS	110lm/w	

FRAMELESS SURFACE PANEL LIGHT



SANAN/BRIDGELUX

MODEL	WATT	SIZE	LED QTY	LUMEN	PARAMETER
GD-FSR-18	18W + 18W	Ø120mm	90PCS	100lm/w	Material: Diecast Aluminium,Stamping Aluminum,Stamping Iron Light source: SMD2835 CCT: 2700K-10000K CRI: 70 or 80 LED Driver: Isolated constant current driver(IC) Input Voltage: AC85-265v 50/60Hz Warranty: 2 years or 3 years
GD-FSR-24	24W + 24W	Ø170mm	144PCS	110lm/w	
GD-FSR-36	36W + 36W	Ø220mm	240PCS	110lm/w	
GD-FSS-18	18W + 18W	120*120mm	90PCS	100lm/w	
GD-FSS-24	24W + 24W	170*170mm	144PCS	110lm/w	
GD-FSS-36	36W + 36W	220*220mm	240PCS	110lm/w	



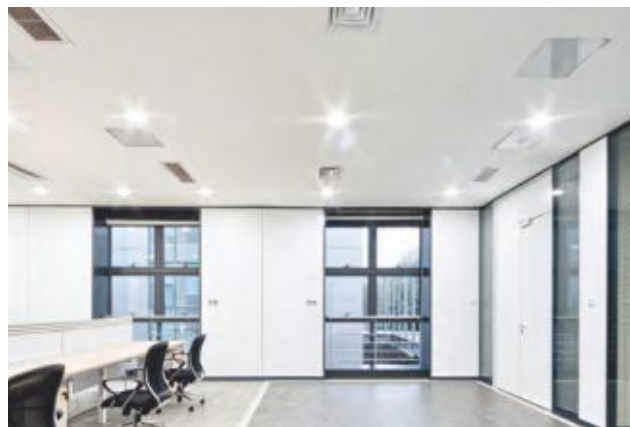
### LED glasspanellight

Material:Diecast Aluminium,Tempered-glass

LED Driver:Isolated constant driver

Input Voltage:AC85-265V,50/60Hz

Warranty:2 Years or 3 Years



### LED glasspanellight

Material:Diecast Aluminium,Tempered-glass

LED Driver:Isolated constant driver

Input Voltage:AC85-265V,50/60Hz

Warranty:2 Years or 3 Years



## GD-DS

SANAN/BRIDGELUX

MODEL	WATT	SIZE	CUT SIZE	CHIPS	LUMEN	PARAMETER
GD-DS-5W	5W	100*100	75*75	COB/1PCS	80lm/w	Material: Dicast Aluminium/ Plastic, Stamping Iron, Glass Light source: COB CCT: 2700K-10000K CRI: 70 or 80 LED Driver: Non-isolatd/Isolated constant curren driver (IC) Input Voltage: AC85-265V 50/60Hz Warranty: 2 Years or 3Years
GD-DS-9W	9W	120*120	95*95	COB/1PCS	80lm/w	
GD-DS-12W	12W	160*160	120*120	COB/1PCS	80lm/w	
GD-DS-18W	18W	200*200	160*160	COB/1PCS	80lm/w	
GD-DS-24W	24W	240*240	205*205	COB/1PCS	80lm/w	

## GD-DR

SANAN/BRIDGELUX

SHAPE	WATT	COLOR	BODY COLOR	SIZE/MM	CUT SIZE/MM	LED QTY	MARTERIAL	RA.	DRIVER	PF.	INPUT V.	WARRANTY
GD-DR-5W	5W	WH+WW	WHITE	Ø100	Ø75	COB/1pcs	Aluminum+GALSS	Ra ≥70	nonisolated driver	PF ≥0.5	AC170~ 265V	2 years
GD-DR-9W	9W	WH+WW		Ø120	Ø95	COB/1pcs						
GD-DR-12W	12W	WW+WH		Ø160	Ø120	COB/1pcs						
GD-DR-18W	18W	WH+WW		Ø200	Ø160	COB/1pcs						
GD-DR-24W	24W	WH+WW		Ø240	Ø205	COB/1pcs						

LED Panel Light

Material:Diecast Aluminium  
LED Driver:Isolated constant driver  
Input Voltage:AC85-265V,50/60Hz  
Warranty:2 Years or 3 Years



LED Panel Light

Material:Diecast Aluminium  
LED Driver:Isolated constant driver  
Input Voltage:AC85-265V,50/60Hz  
Warranty:2 Years or 3 Years



GD-SCM

SANAN/BRIDGELUX

SHAPE	WATT	COLOR	BODY COLOR	SIZE/MM	CUT SIZE/MM	LED QTY	MARTERIAL	RA.	DRIVER	PF.	INPUT V.	WARRANTY
GD-SCM-6+3W	6+3W	WH+PK	WHITE	Ø125	/		Die-Casting Aluminum	Ra ≥70	nonisolated driver	PF ≥0.5	AC170~265V	2 years
GD-SCM-12+4W	12+4W	WH+PK		Ø175	/							
GD-SCM-18+6W	18+6W	WH+BL		Ø225	/							

GD-SCA

SANAN/BRIDGELUX

SHAPE	WATT	COLOR	BODY COLOR	SIZE/MM	CUT SIZE/MM	LED QTY	MARTERIAL	RA.	DRIVER	PF.	INPUT V.	WARRANTY
GD-SCA-3+3W	3+3W	WH+WW	WHITE	Ø90	Ø70		Die-Casting Aluminum	Ra ≥70	nonisolated driver	PF ≥0.5	AC170~265V	2 years
GD-SCA-6+3W	6+3W	WH+BL		Ø125	Ø60-75							
GD-SCA-12+4W	12+4W	WH+BL		Ø175	Ø60-120							
GD-SCA-18+6W	18+6W	WH+WW		Ø225	Ø60-160							



LED Panel Light

Material:Diecast Aluminium  
LED Driver:Isolated constant driver  
Input Voltage:AC85-265V,50/60Hz  
Warranty:2 Years or 3 Years



LED Panel Light

Material:Diecast Aluminium  
LED Driver:Isolated constant driver  
Input Voltage:AC85-265V,50/60Hz  
Warranty:2 Years or 3 Years



GD-TR

SANAN/BRIDGELUX

SHAPE	WATT	COLOR	BODY COLOR	SIZE/MM	CUT SIZE/MM	LED QTY	MARTERIAL	RA.	DRIVER	PF.	INPUT V.	WARRANTY
GD-TR -9	9W	WH	WHITE+BLUE WHITE+RED WHITE+GREEN WHITE+WHITE	Ø85	Ø73		Aluminum+Plastic	Ra ≥70	nonisolated driver	PF ≥0.5	AC170~ 265V	2 years
GD-TR -18	18W	WH		Ø115	Ø60-93							
GD-TR -24	24W	WH		Ø170	Ø60-140			Ra ≥70	nonisolated driver	PF ≥0.5	AC170~ 265V	2 years
GD-TR -36	36W	WH		Ø220	Ø60-195							

GD-TR-2

SANAN/BRIDGELUX

MODEL	WATT	SIZE(MM)	CUT SIZE	CHIPS	LUMEN	PARAMETER
GD-TR-2-6+3W	6+3W	Ø88*18H	Ø60-73	SMD2835	80lm/w	Material: Plastic Light source: SMD2835 CCT: 2700K-10000K CRI: 70 or 80 LED Driver: Non-isolatd/Isolated constant current driver (IC) Input Voltage: AC85-265V 50/60Hz Warranty: 1 Years or 2Years
GD-TR-2-12+4W	12+4W	Ø118*19H	Ø60-93	SMD2835	80lm/w	
GD-TR-2-18+6W	18+6W	Ø170*20H	Ø60-140	SMD2835	80lm/w	
GD-TR-2-30+8W	30+8W	Ø222*20H	Ø60-195	SMD2835	80lm/w	

**LED Panel Light**

Material:Diecast Aluminium  
LED Driver:Isolated constant driver  
Input Voltage:AC85-265V,50/60Hz  
Warranty:2 Years or 3 Years



**LED Panel Light**

Material:Diecast Aluminium  
LED Driver:Isolated constant driver  
Input Voltage:AC85-265V,50/60Hz  
Warranty:2 Years or 3 Years



**GD-FSR**

**SANAN/BRIDGELUX**

MODEL	WATT	SIZE(MM)	CUT SIZE	CHIPS	LUMEN	PARAMETER
GD-SFR-6+3W	10W	Ø90*40	Ø70	SMD2835	CW/NW/WW	Material: Dicast Aluminum, Plastic Light source: SMD2835 CCT: 2700K-10000K CRI: 70 or 80 LED Driver: Non-isolatd/Isolated constant curren driver (IC) Input Voltage: AC85-265V 50/60Hz Warranty: 2 Years or 3 Years
GD-SFR-12W	12W	Ø120*40	Ø100	SMD2835	80lm/w	
GD-SFR-18W	18W	Ø145*40	Ø125	SMD2835	80lm/w	
GD-SFR-24W	24W	Ø175*40	Ø155	SMD2835	80lm/w	
GD-SFR-36W	36W	Ø220*40	Ø200	SMD2835	80lm/w	
GD-SFS-10W	10W	90*90*40	70*70	SMD2835	80lm/w	
GD-SFS-12W	12W	120*120*40	100*100	SMD2835	80lm/w	
GD-SFS-18W	18W	145*145*40	125*125	SMD2835	80lm/w	
GD-SFS-24W	24W	175*175*40	155*155	SMD2835	80lm/w	
GD-SFS-336W	36W	220*220*40	200*200	SMD2835	80lm/w	

**GD-TD**

**SANAN/BRIDGELUX**

SHAPE	WATT	COLOR	BODY COLOR	SIZE/MM	CUT SIZE/MM	MARTERIAL	RA.	DRIVER	PF.	INPUT V.	WARRANTY
GD-TD-10	10W	WH	WHITE+BLUE WHITE+RED WHITE+GREEN WHITE+WHITE	Ø105	Ø45-80	Plastic	Ra ≥70	nonisolated driver	PF ≥0.5	AC170~ 265V	2 years
GD-TD-18	18W	WH		Ø125	Ø45-110						
GD-TD-24	24W	WH		Ø175	Ø45-160		Ra ≥70	nonisolated driver	PF ≥0.5	AC170~ 265V	2 years
GD-TD-36	36W	WH		Ø225	Ø45-210						





**LED Plastic Panel Light**

Material:Plastic  
LED Driver:Isolated constant driver  
Input Voltage :AC85-265V,50/60Hz  
Warranty:2 Years or 3 Years



**GD-SSK**

**SANAN/BRIDGELUX**

SHAPE	WATT	COLOR	BODY COLOR	SIZE/MM	CUT SIZE/MM	LED QTY	MARTERIAL	RA.	DRIVER	PF.	INPUT V.	WARRANTY
GD-SSK-9W	9W	WH	WHITE	115*115	105*105		Plastic	Ra ≥70	nonisolated driver	PF ≥0.5	AC170~265V	2 years
GD-SSK-18W	18W	WH		165*165	155*155							
GD-SSK-24W	24W	WH		216*216	205*205							

LED Plastic Panel Light

Material: Plastic  
LED Driver: Isolated constant driver  
Input Voltage: AC85-265V, 50/60Hz  
Warranty: 2 Years or 3 Years



LED Plastic Panel Light

Material: Plastic  
LED Driver: Isolated constant driver  
Input Voltage: AC85-265V, 50/60Hz  
Warranty: 2 Years or 3 Years



GD-SLSA

SANAN/BRIDGELUX

SHAPE	WATT	COLOR	BODY COLOR	SIZE/MM	CUT SIZE/MM	LED QTY	MARTERIAL	RA.	DRIVER	PF.	INPUT V.	WARRANTY
GD-SLSA-6W	6W	WH	WHITE	118*118	105*105		Plastic+Iron	Ra ≥70	nonisolated driver	PF ≥0.5	AC170~265V	2 years
GD-SLSA-12W	12W	WH		168*168	150*150							
GD-SLSA-18W	18W	WH		225*225	205*205							
GD-SLSA-24W	24W	WH		300*300	280*280							

GD-SLRA

SANAN/BRIDGELUX

SHAPE	WATT	COLOR	BODY COLOR	SIZE/MM	CUT SIZE/MM	LED QTY	MARTERIAL	RA.	DRIVER	PF.	INPUT V.	WARRANTY
GD-SLRA-6W	6W	WH	WHITE	Ø118	Ø105		Plastic+Iron	Ra ≥70	nonisolated driver	PF ≥0.5	AC170~ 265V	2 years
GD-SLRA-12W	12W	WH		Ø168	Ø150							
GD-SLRA-18W	18W	WH		Ø225	Ø205							
GD-SLRA-24W	24W	WH		Ø300	Ø280							

LED Plastic Panel Light

Material:Plastic  
LED Driver:Isolated constant driver  
Input Voltage:AC85-265V,50/60Hz  
Warranty:2 Years or 3 Years



LED Plastic Panel Light

Material:Plastic  
LED Driver:Isolated constant driver  
Input Voltage:AC85-265V,50/60Hz  
Warranty:2 Years or 3 Years



GD-SLRM

SANAN/BRIDGELUX

SHAPE	WATT	COLOR	BODY COLOR	SIZE/MM	CUT SIZE/MM	LED QTY	MARTERIAL	RA.	DRIVER	PF.	INPUT V.	WARRANTY
GD-SLRM-6W	6W	WH	WHITE	Ø118	/		Plastic+Iron	Ra ≥70	nonisolated driver	PF ≥0.5	AC170~ 265V	2 years
GD-SLRM-12W	12W	WH		Ø168	/							
GD-SLRM-18W	18W	WH		Ø225	/							
GD-SLRM-24W	24W	WH		Ø300	/							

GD-SLSM

SANAN/BRIDGELUX

SHAPE	WATT	COLOR	BODY COLOR	SIZE/MM	CUT SIZE/MM	LED QTY	MARTERIAL	RA.	DRIVER	PF.	INPUT V.	WARRANTY
GD-SLSM-6W	6W	WH	WHITE	118*118	/		Plastic+Iron	Ra ≥70	nonisolated driver	PF ≥0.5	AC170~265V	2 years
GD-SLSM-12W	12W	WH		168*168	/							
GD-SLSM-18W	18W	WH		225*225	/							
GD-SLSM-24W	24W	WH		300*300	/							



BI COLOR PANEL LIGHT



SANAN/BRIDGELUX

MODEL	WATT	SIZE	CUT SIZE	LED QTY	LUMEN	PARAMETER
GD-RB-3+3W	3+3W	Ø105mm	Ø70mm	15+15PCS	180lm	Material: Diecast Aluminium Light source: SMD2835 CCT: 2700K-10000K+BLUE/GREEN/PINK/RED/YELLOW CRI: 70 or 80 LED Driver: Isolated constant current driver(IC) Input Voltage: AC85-265v 50/60Hz Warranty: 2 years or 3 years
GD-RB-6+3W	6+3W	Ø145mm	Ø105mm	30+30PCS	360lm	
GD-RB-12+4W	12+4W	Ø195mm	Ø155mm	60+40PCS	960lm	
GD-RB-18+6W	18+6W	Ø245mm	Ø205mm	90+60PCS	1620lm	
GD-SB-3+3W	3+3W	105*105mm	70*70mm	15+15PCS	180lm	
GD-SB-6+3W	6+3W	145*145mm	105*105mm	30+30PCS	360lm	
GD-SB-12+4W	12+4W	195*195mm	155*155mm	60+40PCS	960lm	
GD-SB-18+6W	18+6W	245*245mm	205*205mm	90+60PCS	1620lm	

LED BULB



SANAN/BRIDGELUX

MODEL	WATT	SIZE	INSTALLATION	LED QTY		PARAMETER
				DOB	DRIVER	
GD-AB-5	5W	A55	E27/B22	6	6	Material: Aluminium&ABS Light source: SMD2835 CCT: 2700K-10000K CRI: 80 Input Voltage: AC175-265v 50/60Hz Warranty: 1 years or 2 years
GD-AB-7	7W	A60-113	E27/B22	8	8	
GD-AB-10	10W	A60-113	E27/B22	10	12	
GD-AB-12	12W	A60-118	E27/B22	14	15	
GD-AB-15	15W	A70-135	E27/B22	18	18	
GD-AB-18	18W	A80-145	E27/B22	22	22	
GD-TB-20	20W	T80	E27/B22	20	24	
GD-TB-30	30W	T100	E27/B22	32	34	
GD-TB-40	40W	T115	E27/B22	40	44	
GD-TB-50	50W	T125	E27/B22	48	54	
GD-TB-60	60W	T140	E27/B22	58	63	



GUANDING LIGHTING

LED DWON LIGHT

LED Dwon Light

Material:Diecast Aluminium,Tempered-glass  
LED Driver:Isolated constant driver  
Input Voltage:AC85-265V,50/60Hz  
Warranty:2 Years or 3 Years

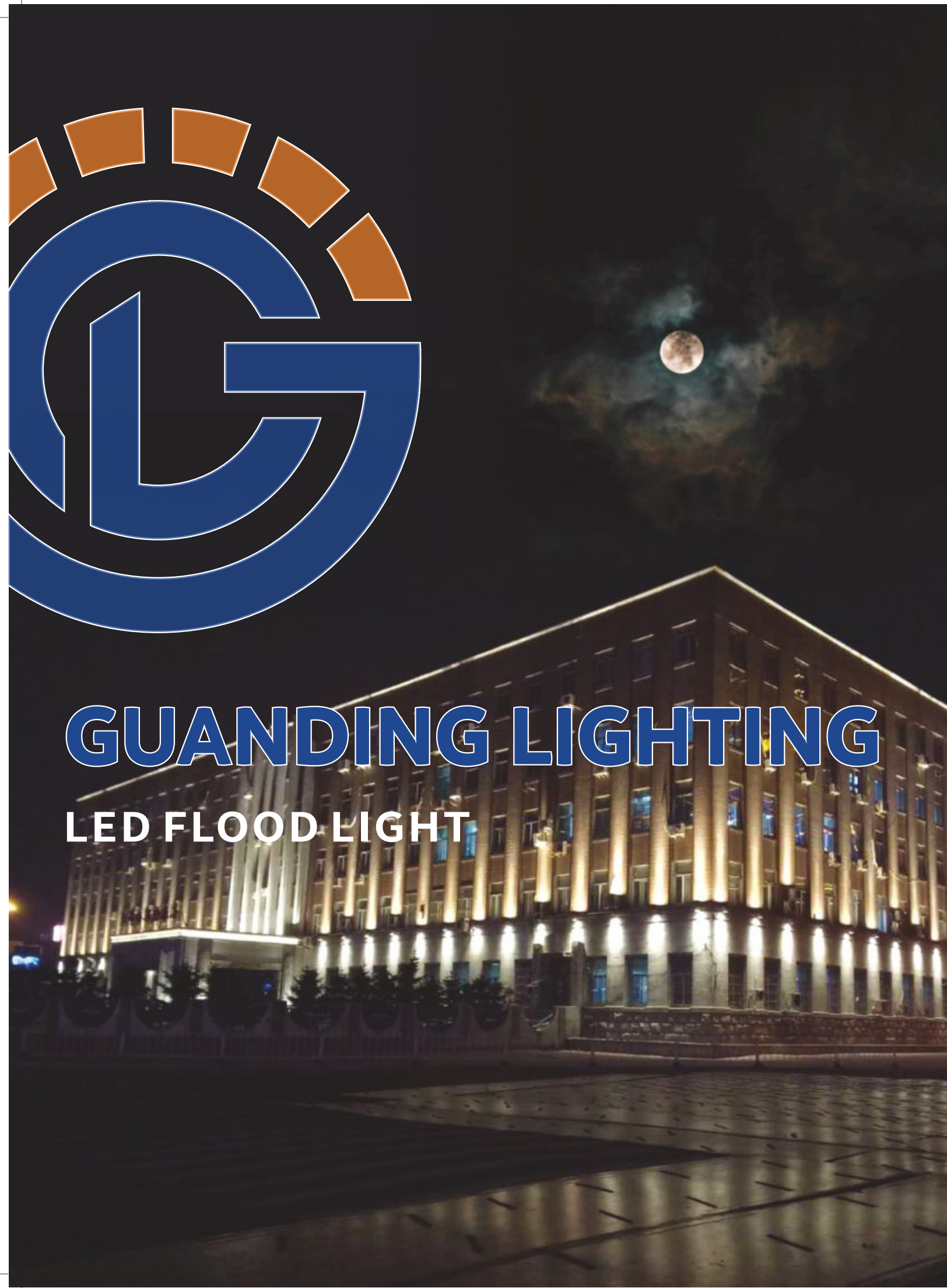


GD-SPS

SANAN/BRIDGELUX

SHAPE	WATT	COLOR	BODY COLOR	SIZE/MM	CUT SIZE/MM	LED QTY	MARTERIAL	RA.	DRIVER	PF.	INPUT V.	WARRANTY
GD-SPN-7+7W	7+7W	WH+WW	SN+CH	Ø95	Ø65	1pcs	Aluminum	Ra≥70	nonisolated driver	PF≥0.5	AC170~265V	2 years
GD-SPN-10+10W	10+10W	WH+WW	SN+CH	Ø105	Ø75	1pcs						





LED FLOOD LIGHT

Ultrathin LED Flood Light

Material:Stamping Aluminium,Tempered-glass  
Input Voltage:AC170-265V,50/60Hz  
Warranty:2 Years



GD-P1

SANAN/BRIDGELUX

MODEL	WATT	SIZE	CHIPS	CCT	CRI	LUMEN	IP Rank
GD-P1-10W	10w	90*75*25mm	SMD2835/12PCS	CW/NW/WW	80	90lm/w	66
GD-P1-20W	20w	115*115*26mm	SMD2835/24PCS	CW/NW/WW	80	90lm/w	66
GD-P1-30W	30w	170*170*26mm	SMD2835/36PCS	CW/NW/WW	80	100lm/w	66
GD-P1-50W	50w	190*190*28mm	SMD2835/72PCS	CW/NW/WW	80	100lm/w	66
GD-P1-100W	100w	285*285*29mm	SMD2835/144PCS	CW/NW/WW	80	100lm/w	66
GD-P1-150W	150w	320*320*30mm	SMD2835/216PCS	CW/NW/WW	80	100lm/w	66
GD-P1-200W	200W	360*360*30mm	SMD2835/288PCS	CW/NW/WW	80	100lm/w	66



LED Flood Light

Material:Diecast Aluminium,Tempered-glass  
Input Voltage:AC85-265V,50/60Hz  
Warranty:2 Years or 3 Years



LED Flood Light

Material:Diecast Aluminium,Tempered-glass  
Input Voltage:AC85-265V,50/60Hz  
Warranty:2 Years or 3 Years



GD-WK06-02

SANAN/BRIDGELUX

MODEL	WATT		LED	SIZE(mm)	MARTERIAL	RA	PF	INPUTV.	SURGE PROTECT	WARRANTY
GD-F4-10W	10W	90%	12pcs	90*70*24	Die-casting aluminum+glass	Ra=80	PF=0.9	DOB/LINER AC165~265V	2.5KV	2year
GD-F4-20W	20W	90%	24pcs	110*90*28						
GD-F4-30W	30W	90%	36pcs	135*110*30						
GD-F4-50W	50W	90%	70pcs	172*142*25						
GD-F4-100W	100W	90%	140pcs	240*196*31					4.0KV	
GD-F4-150W	150W	90%	170pcs	285*235*35						
GD-F4-200W	200W	90%	238pcs	335*275*35						
GD-F4-300W	300W	90%	360pcs	380*310*40						

GD-F5

SANAN/BRIDGELUX

MODEL	WATT		LED	SIZE(mm)	MARTERIAL	RA	PF	INPUTV.	SURGE PROTECT	WARRANTY
GD-F5-10W	10W	90%	16pcs	99*85*21	Die-casting aluminum+glass	Ra=80	PF=0.9	DOB/LINER AC165~265V	2.5KV	2year
GD-F5-20W	20W	90%	25pcs	118*103*21						
GD-F5-30W	30W	90%	49pcs	156*135*26						
GD-F5-50W	50W	90%	81pcs	191*164*30						
GD-F5-100W	100W	90%	144pcs	231*198*30					4.0KV	
GD-F5-150W	150W	90%	196pcs	267*229*30						
GD-F5-200W	200W	90%	289pcs	303*264*31						
GD-F5-300W	300W	90%	432pcs	344*301*32						

LED Flood Light

Material:Diecast Aluminium,Tempered-glass  
Input Voltage:AC85-265V,50/60Hz  
Warranty:2 Years or 3 Years



LED Flood Light

Material:Diecast Aluminium  
Input Voltage:AC85-265V,50/60Hz  
Warranty:2 Years or 3 Years



GD-WK02-MY01

SANAN/BRIDGELUX

MODEL	WATT		LED	SIZE(mm)	MARTERIAL	RA	PF	INPUTV.	SURGE PROTECT	WARRANTY
GD-P6-50W	50W	30%	COB/1PCS	155*115*15	Die-casting aluminum+glass	Ra=80	PF=0.9	DOB/LINER AC165~265V	2.5KV	2year
GD-P6-100W	100w	30%	COB/2PCS	200*165*17						
GD-P6-200W	200W	30%	COB/4PCS	242*200*20						
GD-P6-300W	300W	30%	COB/6PCS	270*235*20						
GD-P6-400W	400W	30%	COB/8PCS	315*265*20						
GD-P6-500W	500W	30%	COB/10PCS	315*265*20						
GD-P6-600W	600W	30%	COB/12PCS	330*290*20						
GD-P6-800W	800W	30%	COB/16PCS	433*290*20						
GD-P6-1000W	1000W	30%	COB/18PCS	433*290*20						

GD-P7

SANAN/BRIDGELUX

MODEL	WATT		LED	SIZE(mm)	MARTERIAL	RA	PF	INPUTV.	SURGE PROTECT	WARRANTY
GD-P7-30W	30W	90%	36pcs	123*148*23.8	Die-casting aluminum+PC	Ra=80	PF=0.9	DOB/LINER AC165~265V	2.5KV	2year
GD-P7-50W	50W	90%	72pcs	160*205*25.5						
GD-P7-100W	100W	90%	144pcs	210*270*25						
GD-P7-150W	150W	90%	216pcs	248*329*25						
GD-P7-200W	200W	90%	288pcs	280*378*25						
GD-P7-300W	300W	90%	434pcs	315*425*27						
GD-P7-400W	400W	90%	576pcs	470*360*25						



## LED Flood Light

Material:Diecast Aluminium  
Input Voltage:AC85-265V,50/60Hz  
Warranty:2 Years or 3 Years



## LED Flood Light

Material:Diecast Aluminium,Tempered-glass  
LED Driver:Isolated constant driver  
Input Voltage:AC85-265V,50/60Hz  
Warranty:2 Years or 3 Years



## GD-WK09-TGD02

SANAN/BRIDGELUX

MODEL	WATT		LED	SIZE(mm)	MARTERIAL	RA	PF	INPUTV.	SURGE PROTECT	WARRANTY
GD-P8-50W	50W	90%	72pcs	173*201*28	Die-casting aluminum+PC	Ra=80	PF=0.9	DOB/LINER AC165~265V	2.5KV	2year
GD-P8-100W	100W	90%	144pcs	221*252*30						
GD-P8-150W	150W	90%	210pcs	265*311*32						
GD-P8-200W	200W	90%	288pcs	300*343*33						
GD-P8-300W	300W	90%	360pcs	326*374*35						
									4.0KV	



## GD-WK05-01

SANAN/BRIDGELUX

MODEL	WATT		LED	SIZE(mm)	MARTERIAL	RA	PF	INPUTV.	SURGE PROTECT	WARRANTY
GD-P10-50W	50W	90%	71pcs	195*225*48	Die-casting aluminum+glass	Ra=80	PF=0.9	NON-ISOLATION DRIVER AC165~265V	2.5KV	2year
GD-P10-100W	100W	90%	142pcs	245*275*48					4.0KV	
GD-P10-200W	200W	90%	284pcs	355*315*75						
GD-P10-300W	300W	90%	426pcs	375*425*80						
GD-P10-400W	400W	90%	568pcs	525*410*80						
GD-P10-500W	500W	90%	710pcs	605*410*80						
GD-P10-600W	600W	90%	852pcs	710*410*90						



## LED Flood Light

Material:Diecast Aluminium

Input Voltage:AC85-265V,50/60Hz

Warranty:2 Years or 3 Years



## LED Flood Light

Material:Diecast Aluminium,Tempered-glass

LED Driver:Isolated constant driver

Input Voltage:AC85-265V,50/60Hz

Warranty:2 Years or 3 Years



## GD-WK08-XG06

SANAN/BRIDGELUX

MODEL	WATT		LED	SIZE(mm)	MARTERIAL	RA	PF	INPUTV.	SURGE PROTECT	WARRANTY
GD-P9-50W	50W	90%	100pcs	220*190*42	Die-casting aluminum+glass	Ra=80	PF=0.9	ISOLATION DRIVER AC110 ~265V	2.5KV	2year
GD-P9-100W	100W	90%	144pcs	265*240*42					4.0KV	
GD-P9-150W	150W	90%	192pcs	320*290*55						
GD-P9-200W	200W	90%	256pcs	360*320*55						
GD-P9-300W	300W	90%	480pcs	400*375*60						
GD-P9-400W	400W	90%	672pcs	475*412*65						

## GD-P11

SANAN/BRIDGELUX

MODEL	WATT		LED	SIZE(mm)	MARTERIAL	RA	PF	INPUTV.	SURGE PROTECT	WARRANTY
GD-P9-50W	50W	90%	60pcs	212*200*38	Die-casting aluminum+glass	Ra=80	PF=0.5	DOB AC170 ~265V	2.5KV	2year
GD-P9-100W	100W	90%	144pcs	268*258*38					4.0KV	
GD-P9-150W	150W	90%	180pcs	392*280*42						
GD-P9-200W	200W	90%	240pcs	334*320*48						

## LED Flood Light

Material:Diecast Aluminium

Input Voltage:AC85-265V,50/60Hz

Warranty:2 Years or 3 Years



## LED Flood Light

Material:Diecast Aluminium,Tempered-glass

Input Voltage:AC85-265V,50/60Hz

Warranty:2 Years or 3 Years



## GD-WK16-HB02

SANAN/BRIDGELUX

MODEL	WATT		LED	SIZE(mm)	MARTERIAL	RA	PF	INPUTV.	SURGE PROTECT	WARRANTY
GD-P12-100W	100W	90%	144pcs	260*260*34	Die-casting aluminum+PC	Ra=80	PF=0.9	DOB/LINER AC165~265V	2.5KV	2year
GD-P12-150W	150W	90%	180pcs	302*302*34					4.0KV	
GD-P12-200W	200W	90%	252pcs	332*332*34						

## GD-WK15-HF01

SANAN/BRIDGELUX

MODEL	WATT		LED	SIZE(mm)	MARTERIAL	RA	PF	INPUTV.	SURGE PROTECT	WARRANTY	
GD-F6-10W	10W	90%		105*90*30	Die-casting aluminum+PC	Ra=80	PF=0.9	DOB/LINER AC165~265V	2.5KV	2year	
GD-F6-20W	20W	90%		118*98*30							
GD-F6-30W	30W	90%		160*125*30							
GD-F6-50W	50W	90%		204*152*34							
GD-F6-100W	100W	90%		269*216*36							
GD-F6-150W	150W	90%		334*237*37							
GD-F6-200W	200W	90%		378*288*37					4.0KV		
GD-F6-300W	300W	90%		433*328*38							
GD-F6-400W	400W	90%		488*328*39							



## LED Flood Light

Material:Diecast Aluminium,Tempered-glass

LED Driver:Constant Current driver

Input Voltage:AC100-265V,50/60Hz

Warranty:2 Years



## GD-WK02-MY03

SANAN/BRIDGELUX

MODEL	WATT	SIZE	CHIPS	CCT	CRI	LUMEN	IP Rank
GD-P5-50W	50w	185*135*35mm	COB/1PCS	CW/NW/WW	80	100lm/w	66
GD-P5-100W	100w	240*157*35mm	COB/2PCS	CW/NW/WW	80	100lm/w	66
GD-P5-200W	200w	286*196*30mm	COB/4PCS	CW/NW/WW	80	100lm/w	66
GD-P5-300W	300w	336*223*33mm	COB/6PCS	CW/NW/WW	80	100lm/w	66
GD-P5-400W	400w	412*275*37mm	COB/8PCS	CW/NW/WW	80	100lm/w	66
GD-P5-500W	500w	441*275*37mm	COB/10PCS	CW/NW/WW	80	100lm/w	66
GD-P5-600W	600w	542*301*40mm	COB/12PCS	CW/NW/WW	80	100lm/w	66
GD-P5-800W	800w	542*301*40mm	COB/16PCS	CW/NW/WW	80	100lm/w	66
GD-P5-1000W	1000w	625*301*40mm	COB/20PCS	CW/NW/WW	80	100lm/w	66

## LED Flood Light

Material:Diecast Aluminium

LED Driver:Isolated constant driver

Input Voltage:AC85-265V,50/60Hz

Warranty:2 Years or 3 Years



## GD-BFM

SANAN/BRIDGELUX

MODEL	WATT	SIZE	CHIPS	CCT	CRI	LUMEN	IP Rank
GD-P11-30W	30w	167*157*31mm	SMD2835/3030	CW/NW/WW	80	120lm/w	66
GD-P11-50W	50w	197*188*39mm	SMD2835/3030	CW/NW/WW	80	120lm/w	66
GD-P11-100W	100w	256*248*44mm	SMD2835/3030	CW/NW/WW	80	120lm/w	66
GD-P11-150W	150w	298*288*48mm	SMD2835/3030	CW/NW/WW	80	120lm/w	66
GD-P11-200W	200w	327*316*48mm	SMD2835/3030	CW/NW/WW	80	120lm/w	66
GD-P11-300W	300w	405*335*56mm	SMD2835/3030	CW/NW/WW	80	120lm/w	66
GD-P11-400W	400w	428*365*56mm	SMD2835/3030	CW/NW/WW	80	120lm/w	66
GD-P11-500W	500w	467*398*56mm	SMD2835/3030	CW/NW/WW	80	120lm/w	66
GD-P11-600W	600w	495*427*56mm	SMD2835/3030	CW/NW/WW	80	120lm/w	66



## LED Flood Light

Material:Diecast Aluminium,Tempered-glass

LED Driver:Isolated constant driver

Input Voltage:AC85-265V,50/60Hz

Warranty:2 Years or 3 Years



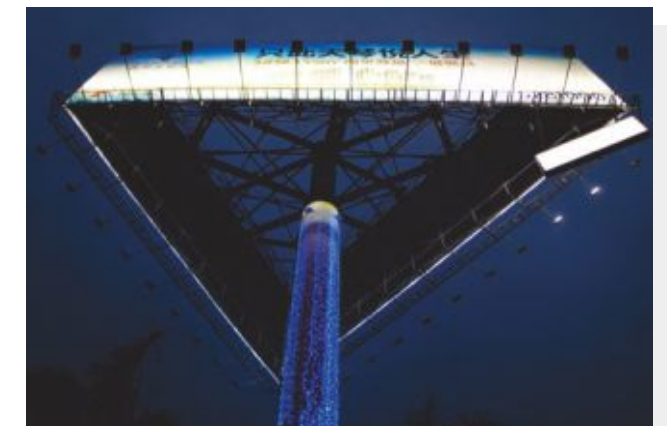
## Ultrathin LED Flood Light

Material:Diecast Aluminium,Tempered-glass

LED Driver:DOB or Constant Current driver

Input Voltage:AC100-265V,50/60Hz

Warranty:2 Years



## GD-P19

SANAN/BRIDGELUX

MODEL	WATT	SIZE	CHIPS	CCT	CRI	LUMEN	IP Rank
GD-P19-50W	50w	185*140mm	SMD2835/COB	CW/NW/WW	80	90lm/w	66
GD-P19-100W	100w	250*158mm	SMD2835/COB	CW/NW/WW	80	90lm/w	66
GD-P19-200W	200w	285*235mm	SMD2835/COB	CW/NW/WW	80	100lm/w	66
GD-P19-300W	300w	415*255mm	SMD2835/COB	CW/NW/WW	80	100lm/w	66
GD-P19-400W	400w	540*255mm	SMD2835/COB	CW/NW/WW	80	100lm/w	66
GD-P19-500W	500w	540*310mm	SMD2835/COB	CW/NW/WW	80	100lm/w	66
GD-P19-600W	600w	540*310mm	SMD2835/COB	CW/NW/WW	80	100lm/w	66



## GD-WK10-PG01

SANAN/BRIDGELUX

MODEL	WATT	SIZE	CHIPS	CCT	CRI	LUMEN	IP Rank
GD-F1-5W	5w	84.5*57.5*29mm	SMD2835/3030	CW/NW/WW	80	100lm/w	66
GD-F1-10W	10w	104.5*84.5*28.3mm	SMD2835/3030	CW/NW/WW	80	100lm/w	66
GD-F1-20W	20w	118*93*28.3mm	SMD2835/3030	CW/NW/WW	80	100lm/w	66
GD-F1-30W	30w	160*120*28.5mm	SMD2835/3030	CW/NW/WW	80	100lm/w	66
GD-F1-50W	50w	203.8*145*29.5mm	SMD2835/3030	CW/NW/WW	80	110lm/w	66
GD-F1-75W	75W	236.5*177*29.5mm	SMD2835/3030	CW/NW/WW	80	110lm/w	66
GD-F1-100W	100w	269*209*29.65mm	SMD2835/3030	CW/NW/WW	80	110lm/w	66
GD-F1-150W	150w	334*228.5*30.65mm	SMD2835/3030	CW/NW/WW	80	110lm/w	66
GD-F1-200W	200w	377.5*277*31.3mm	SMD2835/3030	CW/NW/WW	80	110lm/w	66
GD-F1-300W	300w	433*318*31.3mm	SMD2835/3030	CW/NW/WW	80	110lm/w	66
GD-F1-400W	400w	488*328*39mm	SMD2835/3030	CW/NW/WW	80	110lm/w	66
GD-F1-500W	500w	592*328*39mm	SMD2835/3030	CW/NW/WW	80	110lm/w	66
GD-F1-600W	600w	696*328*43mm	SMD2835/3030	CW/NW/WW	80	110lm/w	65

LED Flood Light

Material:Diecast Aluminium,Tempered-glass  
Input Voltage:AC165-265V,50/60Hz  
Warranty:2 Years



LED Flood Light

Material:Diecast Aluminium,Tempered-glass  
LED Driver:Isolated Constant Current driver  
Input Voltage:AC85-265V,50/60Hz  
Warranty:2 Years or 3 Years



GD-F2

SANAN/BRIDGELUX

MODEL	WATT	SIZE	CHIPS	CCT	CRI	LUMEN	IP Rank
GD-F2-10W	10w	90*70*20mm	SMD2835	CW/NW/WW	80	90lm/w	66
GD-F2-20W	20w	110*90*30mm	SMD2835	CW/NW/WW	80	90lm/w	66
GD-F2-30W	30w	140*120*30mm	SMD2835	CW/NW/WW	80	100lm/w	66
GD-F2-50W	50w	170*150*30mm	SMD2835	CW/NW/WW	80	100lm/w	66
GD-F2-100W	100w	250*210*30mm	SMD2835	CW/NW/WW	80	100lm/w	66
GD-F2-150W	150w	290*250*30mm	SMD2835	CW/NW/WW	80	100lm/w	66
GD-F2-200W	200w	350*303*42mm	SMD2835	CW/NW/WW	80	100lm/w	66

GD-F3

SANAN/BRIDGELUX

MODEL	WATT	SIZE	CHIPS	CCT	CRI	LUMEN	IP Rank
GD-F3-50W	50w	210*190*41mm	SMD2835/3030	CW/NW/WW	80	120lm/w	66
GD-F3-100W	100w	280*240*45mm	SMD2835/3030	CW/NW/WW	80	120lm/w	66
GD-F3-200W	200w	360*325*50mm	SMD2835/3030	CW/NW/WW	80	120lm/w	66
GD-F3-300W	300w	390*425*52mm	SMD2835/3030	CW/NW/WW	80	120lm/w	66
GD-F3-400W	400w	445*445*55mm	SMD2835/3030	CW/NW/WW	80	120lm/w	66
GD-F3-600W	600w	560*485*60mm	SMD2835/3030	CW/NW/WW	80	120lm/w	66



## LED Flood Light

Material: Diecast Aluminium, Tempered-glass

LED Driver: Linear

Input Voltage: AC 175-265V, 50/60Hz

Warranty: 1 Year



## LED Flood Light

Material: Diecast Aluminium, Tempered-glass

LED Driver: Constant Current driver

Input Voltage: AC 100-265V, 50/60Hz

Warranty: 2 Years



## GD-WK09-TGD01

SANAN/BRIDGELUX

MODEL	WATT	SIZE	CHIPS	CCT	CRI	LUMEN	IP Rank
GD-WK09-TGD01-50W	50W	190*26*137	COB/1PCS	CW/NW/WW	80	100lm/w	66
GD-WK09-TGD01-100W	100W	236*161*27	COB/2PCS	CW/NW/WW	80	100lm/w	66
GD-WK09-TGD01-200W	200W	281*196*27	COB/4PCS	CW/NW/WW	80	100lm/w	66
GD-WK09-TGD01-300W	300W	330*225*28	COB/6PCS	CW/NW/WW	80	100lm/w	66
GD-WK09-TGD01-400W	400W	375*225*28	COB/8PCS	CW/NW/WW	80	100lm/w	66
GD-WK09-TGD01-500W	500W	375*225*28	COB/10PCS	CW/NW/WW	80	100lm/w	66
GD-WK09-TGD01-600W	600W	485*280*32	COB/12PCS	CW/NW/WW	80	100lm/w	66
GD-WK09-TGD01-800W	800W	485*280*32	COB/16PCS	CW/NW/WW	80	100lm/w	66

## GD-WK08-XG01

SANAN/BRIDGELUX

MODEL	WATT	SIZE	CHIPS	CCT	CRI	LUMEN	IP Rank
GD-WK08-XG01-30W	30W	175*205*40	SMD2835/3030	CW/NW/WW	80	100lm/w	66
GD-WK08-XG01-50W	50W	210*240*50	SMD2835/3030	CW/NW/WW	80	100lm/w	66
GD-WK08-XG01-100W	100W	255*285*60	SMD2835/3030	CW/NW/WW	80	100lm/w	66
GD-WK08-XG01-150W	150W	255*285*60	SMD2835/3030	CW/NW/WW	80	100lm/w	66
GD-WK08-XG01-200W	200W	310*345*60	SMD2835/3030	CW/NW/WW	80	100lm/w	66
GD-WK08-XG01-300W	300W	370*420*60	SMD2835/3030	CW/NW/WW	80	100lm/w	66
GD-WK08-XG01-400W	400W	420*420*60	SMD2835/3030	CW/NW/WW	80	100lm/w	66
GD-WK08-XG01-600W	600W	600*420*60	SMD2835/3030	CW/NW/WW	80	100lm/w	66



## LED Flood Light

Material:Diecast Aluminium,Tempered-glass

LED Driver: Constant Current driver

Input Voltage:AC 175-265V,50/60Hz

Warranty: 2Years



## LED Flood Light

Material:Diecast Aluminium

LED Driver: Linear

Input Voltage:AC175-265V,50/60Hz

Warranty:1Year



## GD-WK09-TGD02

SANAN/BRIDGELUX

MODEL	WATT	SIZE	CHIPS	CCT	CRI	LUMEN	IP Rank
GD-WK08-XG02-50W	50W	210*240*50	COB/1PCS	CW/NW/WW	80	100lm/w	66
GD-WK08-XG02-100W	100W	255*285*60	COB/2PCS	CW/NW/WW	80	100lm/w	66
GD-WK08-XG02-150W	150W	310*345*60	COB/3PCS	CW/NW/WW	80	100lm/w	66
GD-WK08-XG02-200W	200W	310*345*60	COB/4PCS	CW/NW/WW	80	100lm/w	66
GD-WK08-XG02-300W	300W	370*420*60	COB/6PCS	CW/NW/WW	80	100lm/w	66

## GD-WK08-XG03

SANAN/BRIDGELUX

MODEL	WATT	SIZE	CHIPS	CCT	CRI	LUMEN	IP Rank
GD-WK08-XG03-30W	30W	170*130*30	SMD2835/3030	CW/NW/WW	80	100lm/w	66
GD-WK08-XG03-50W	50W	205*160*30	SMD2835/3030	CW/NW/WW	80	100lm/w	66
GD-WK08-XG03-100W	100W	275*200*30	SMD2835/3030	CW/NW/WW	80	100lm/w	66
GD-WK08-XG03-150W	150W	320*230*30	SMD2835/3030	CW/NW/WW	80	100lm/w	66
GD-WK08-XG03-200W	200W	380*280*30	SMD2835/3030	CW/NW/WW	80	100lm/w	66
GD-WK08-XG03-300W	300W	430*310*30	SMD2835/3030	CW/NW/WW	80	100lm/w	66
GD-WK08-XG03-400W	400W	490*330*30	SMD2835/3030	CW/NW/WW	80	100lm/w	66

## LED Flood Light

Material:Diecast Aluminium,Tempered-glass

LED Driver: Linear

Input Voltage:AC 175-265V,50/60Hz

Warranty: 1Year



## GD-WK11-01

SANAN/BRIDGELUX

MODEL	WATT	SIZE	CHIPS	CCT	CRI	LUMEN	IP Rank
GD-WK11-01-50W	50W	232*170*45	SMD2835/3030	CW/NW/WW	80	100lm/w	66
GD-WK11-01-100W	100W	285*220*45	SMD2835/3030	CW/NW/WW	80	100lm/w	66
GD-WK11-01-200W	200W	335*240*45	SMD2835/3030	CW/NW/WW	80	100lm/w	66
GD-WK11-01-300W	300W	385*280*48	SMD2835/3030	CW/NW/WW	80	100lm/w	66
GD-WK11-01-400W	400W	432*335*48	SMD2835/3030	CW/NW/WW	80	100lm/w	66

## LED Flood Light

Material:Diecast Aluminium,Tempered-glass

LED Driver: Constant Current driver

Input Voltage:AC 175-265V,50/60Hz

Warranty: 2Years



## GD-WK11-02

SANAN/BRIDGELUX

MODEL	WATT	SIZE	CHIPS	CCT	CRI	LUMEN	IP Rank
GD-WK11-02-50W	50W	255*230*45	SMD2835/3030	CW/NW/WW	80	100lm/w	66
GD-WK11-02-100W	100W	325*275*47	SMD2835/3030	CW/NW/WW	80	100lm/w	66
GD-WK11-02-200W	200W	405*360*60	SMD2835/3030	CW/NW/WW	80	100lm/w	66
GD-WK11-02-300W	300W	455*420*60	SMD2835/3030	CW/NW/WW	80	100lm/w	66
GD-WK11-02-400W	400W	545*435*60	SMD2835/3030	CW/NW/WW	80	100lm/w	66
GD-WK11-02-600W	600W	645*485*60	SMD2835/3030	CW/NW/WW	80	100lm/w	66



## LED Flood Light

Material: Diecast Aluminium, Tempered-glass

LED Driver: Linear

Input Voltage: AC 175-265V, 50/60Hz

Warranty: 1 Year



## LED Flood Light

Material: Diecast Aluminium

LED Driver: Non-isolated driver

Input Voltage: AC 110-265V, 50/60Hz

Warranty: 2 Years



## GD-WK11-03

SANAN/BRIDGELUX

MODEL	WATT	SIZE	CHIPS	CCT	CRI	LUMEN	IP Rank
GD-WK11-03-50W	50W	232*170*45	SMD2835/3030	CW/NW/WW	80	100lm/w	66
GD-WK11-03-100W	100W	285*220*45	SMD2835/3030	CW/NW/WW	80	100lm/w	66
GD-WK11-03-200W	200W	335*240*45	SMD2835/3030	CW/NW/WW	80	100lm/w	66
GD-WK11-03-300W	300W	385*280*48	SMD2835/3030	CW/NW/WW	80	100lm/w	66
GD-WK11-03-400W	400W	432*335*48	SMD2835/3030	CW/NW/WW	80	100lm/w	66



## GD-WK21-01

SANAN/BRIDGELUX

MODEL	WATT	SIZE	CHIPS	CCT	CRI	LUMEN	IP Rank
GD-WK21-01-50W	20W	137*117*34	SMD2835/3030	CW/NW/WW	80	100lm/w	66
GD-WK21-01-30W	30W	170*148*37	SMD2835/3030	CW/NW/WW	80	100lm/w	66
GD-WK21-01-50W	50W	219*188*40	SMD2835/3030	CW/NW/WW	80	100lm/w	66
GD-WK21-01-100W	100W	252*231*53	SMD2835/3030	CW/NW/WW	80	100lm/w	66
GD-WK21-01-150W	150W	300*270*56	SMD2835/3030	CW/NW/WW	80	100lm/w	66
GD-WK21-01-200W	200W	320*290*62	SMD2835/3030	CW/NW/WW	80	100lm/w	66
GD-WK21-01-300W	300W	380*350*63	SMD2835/3030	CW/NW/WW	80	100lm/w	66

## LED Flood Light

Material:Diecast Aluminium,Tempered-glass

LED Driver: Constant Current driver

Input Voltage:AC 175-265V,50/60Hz

Warranty: 2Years



## GD-WK14-WG01

SANAN/BRIDGELUX

MODEL	WATT	SIZE	CHIPS	CCT	CRI	LUMEN	IP Rank
GD-WK14-WG01-30W	100W	300*110*30	SMD2835/3030	CW/NW/WW	80	100lm/w	67
GD-WK14-WG01-30W	150W	360*125*30	SMD2835/3030	CW/NW/WW	80	100lm/w	67
GD-WK14-WG01-30W	200W	460*140*30	SMD2835/3030	CW/NW/WW	80	100lm/w	67
GD-WK14-WG01-30W	300W	510*155*30	SMD2835/3030	CW/NW/WW	80	100lm/w	67

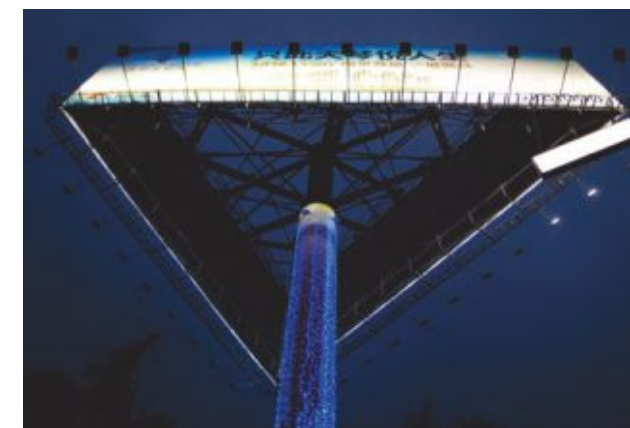
## LED Flood Light

Material:Diecast Aluminium,Tempered-glass

LED Driver: Constant Current driver

Input Voltage:AC175-265V,50/60Hz

Warranty: 2Years



## GD-WK16-KB01

SANAN/BRIDGELUX

MODEL	WATT	SIZE	CHIPS	CCT	CRI	LUMEN	IP Rank
GD-WK16-KB01-50W	50W	241*201*58	COB/1PCS	CW/NW/WW	80	100lm/w	66
GD-WK16-KB01-100W	100W	297*245*65	COB/2PCS	CW/NW/WW	80	100lm/w	66
GD-WK16-KB01-150W	150W	343*297*65	COB/3PCS	CW/NW/WW	80	100lm/w	66
GD-WK16-KB01-200W	200W	343*297*65	COB/4PCS	CW/NW/WW	80	100lm/w	66
GD-WK16-KB01-300W	300W	420*315*75	COB/6PCS	CW/NW/WW	80	100lm/w	66
GD-WK16-KB01-400W	400W	528*346*85	COB/8PCS	CW/NW/WW	80	100lm/w	66
GD-WK16-KB01-500W	500W	628*357*87	COB/10PCS	CW/NW/WW	80	100lm/w	66
GD-WK16-KB01-600W	600W	628*357*87	COB/12PCS	CW/NW/WW	80	100lm/w	66
GD-WK16-KB01-800W	800W	970*360*87	COB/16PCS	CW/NW/WW	80	100lm/w	66
GD-WK16-KB01-1000W	1000W	970*360*87	COB/20PCS	CW/NW/WW	80	100lm/w	66



## LED Flood Light

Material: Diecast Aluminium, Tempered-glass

LED Driver: Linear

Input Voltage: AC 175-265V, 50/60Hz

Warranty: 2 Years



## LED Flood Light

Material: Diecast Aluminium, Tempered-glass

LED Driver: Linear

Input Voltage: AC 175-265V, 50/60Hz

Warranty: 1 Year



## GD-WK02-DF02

SANAN/BRIDGELUX

MODEL	WATT	SIZE	CHIPS	CCT	CRI	LUMEN	IP Rank
GD-WK02-DF02-30W	30W	137.3*117.3*25	SMD2835/3030	CW/NW/WW	80	100lm/w	66
GD-WK02-DF02-50W	50W	167.6*147.6*25	SMD2835/3030	CW/NW/WW	80	100lm/w	66
GD-WK02-DF02-100W	100W	208*183*25	SMD2835/3030	CW/NW/WW	80	100lm/w	66
GD-WK02-DF02-150W	150W	233.75*203.75*25	SMD2835/3030	CW/NW/WW	80	100lm/w	66
GD-WK02-DF02-200W	200W	273.45*233.45*27	SMD2835/3030	CW/NW/WW	80	100lm/w	66
GD-WK02-DF02-300W	300W	323.45*273.4*27	SMD2835/3030	CW/NW/WW	80	100lm/w	66
GD-WK02-DF02-400W	400W	353.45*303.45*30	SMD2835/3030	CW/NW/WW	80	100lm/w	66
GD-WK02-DF02-600W	600W	403.45*343.45*30	SMD2835/3030	CW/NW/WW	80	100lm/w	66



## GD-WK02-XD04

SANAN/BRIDGELUX

MODEL	WATT	SIZE	CHIPS	CCT	CRI	LUMEN	IP Rank
GD-WK02-XD04-50W	30W	137.3*117.3	SMD2835/3030	CW/NW/WW	80	100lm/w	66
GD-WK02-XD04-50W	50W	167.6*147.6	SMD2835/3030	CW/NW/WW	80	100lm/w	66
GD-WK02-XD04-100W	100W	208*183	SMD2835/3030	CW/NW/WW	80	100lm/w	66
GD-WK02-XD04-150W	150W	233.75*203.75	SMD2835/3030	CW/NW/WW	80	100lm/w	66
GD-WK02-XD04-200W	200W	273.45*233.45	SMD2835/3030	CW/NW/WW	80	100lm/w	66
GD-WK02-XD04-300W	300W	323.45*273.4	SMD2835/3030	CW/NW/WW	80	100lm/w	66
GD-WK02-XD04-400W	400W	353.45*303.45	SMD2835/3030	CW/NW/WW	80	100lm/w	66



## LED Flood Light

Material: Diecast Aluminium, Tempered-glass

LED Driver: Non-isolated driver

Input Voltage: AC110-265V 50/60Hz

Warranty: 2 Years



## LED Flood Light

Material: Diecast Aluminium, Tempered-glass

LED Driver: Isolated driver

Input Voltage: AC85-265V 50/60Hz

Warranty: 2 Years



## GD-WK02-ZS03

SANAN/BRIDGELUX

MODEL	WATT	SIZE	CHIPS	CCT	CRI	LUMEN	IP Rank
GD-WK02-ZS03-50W	50W	215*170*40	SMD2835/3030	CW/NW/WW	80	100lm/w	66
GD-WK02-ZS03-100W	100W	280*200*45	SMD2835/3030	CW/NW/WW	80	100lm/w	66
GD-WK02-ZS03-200W	200W	328*243*45	SMD2835/3030	CW/NW/WW	80	100lm/w	66
GD-WK02-ZS03-300W	300W	344*272*45	SMD2835/3030	CW/NW/WW	80	100lm/w	66
GD-WK02-ZS03-400W	400W	440*300*45	SMD2835/3030	CW/NW/WW	80	100lm/w	66
GD-WK02-ZS03-500W	500W	550*365*55	SMD2835/3030	CW/NW/WW	80	100lm/w	66
GD-WK02-ZS03-600W	600W	622*393*55	SMD2835/3030	CW/NW/WW	80	100lm/w	66



## GD-WK08-XG04

SANAN/BRIDGELUX

MODEL	WATT	SIZE	CHIPS	CCT	CRI	LUMEN	IP Rank
GD-WK08-XG04-50W	50W	190*220*45	SMD2835/3030	CW/NW/WW	80	100lm/w	66
GD-WK08-XG04-100W	100W	230*270*50	SMD2835/3030	CW/NW/WW	80	100lm/w	66
GD-WK08-XG04-200W	200W	270*310*50	SMD2835/3030	CW/NW/WW	80	100lm/w	66
GD-WK08-XG04-300W	300W	325*360*50	SMD2835/3030	CW/NW/WW	80	100lm/w	66
GD-WK08-XG04-400W	400W	360*400*50	SMD2835/3030	CW/NW/WW	80	100lm/w	66



**LED Flood Light**

Material:Diecast Aluminium,Tempered-glass  
LED Driver: Linear  
Input Voltage:AC175-265V 50/60Hz  
Warranty: 1 Year



**LED Flood Light**

Material:Diecast Aluminium,Tempered-glass  
LED Driver: Non-isolated driver  
Input Voltage: AC175-265V 50/60Hz  
Warranty: 2 Years



**GD-WK18-TGD02**

SANAN/BRIDGELUX

MODEL	WATT	SIZE	CHIPS	CCT	CRI	LUMEN	IP Rank
GD-WK18-TGD02-50W	30W	160*115*25	SMD2835/3030	CW/NW/WW	80	100lm/w	65
GD-WK18-TGD02-50W	50W	209*149*25	SMD2835/3030	CW/NW/WW	80	100lm/w	65
GD-WK18-TGD02-100W	100W	258*198*25	SMD2835/3030	CW/NW/WW	80	100lm/w	65
GD-WK18-TGD02-150W	150W	309*229*25	SMD2835/3030	CW/NW/WW	80	100lm/w	65
GD-WK18-TGD02-200W	200W	360*255*25	SMD2835/3030	CW/NW/WW	80	100lm/w	65
GD-WK18-TGD02-300W	300W	400*285*25	SMD2835/3030	CW/NW/WW	80	100lm/w	65
GD-WK18-TGD02-400W	400W	450*320*25	SMD2835/3030	CW/NW/WW	80	100lm/w	65



**GD-WK08-XG05**

SANAN/BRIDGELUX

MODEL	WATT	SIZE	CHIPS	CCT	CRI	LUMEN	IP Rank
GD-WK08-XG05-30W	30W	160*185*35	SMD2835/3030	CW/NW/WW	80	100lm/w	65
GD-WK08-XG05-50W	50W	185*220*35	SMD2835/3030	CW/NW/WW	80	100lm/w	65
GD-WK08-XG05-100W	100W	245*280*40	SMD2835/3030	CW/NW/WW	80	100lm/w	65
GD-WK08-XG05-200W	200W	310*340*45	SMD2835/3030	CW/NW/WW	80	100lm/w	65
GD-WK08-XG05-300W	300W	350*350*45	SMD2835/3030	CW/NW/WW	80	100lm/w	65

### LED Flood Light

Material: Diecast Aluminium, Tempered-glass

LED Driver: Linear

Input Voltage: AC175-265V 50/60Hz

Warranty: 1 Year



## GD-WK18-TGD01

SANAN/BRIDGELUX

MODEL	WATT	SIZE	CHIPS	CCT	CRI
GD-WK18-TGD01-30W	30W	145*122*33	SMD2835/3030	CW/NW/WW	80
GD-WK18-TGD01-50W	50W	185*162*33	SMD2835/3030	CW/NW/WW	80
GD-WK18-TGD01-100W	100W	245*225*36	SMD2835/3030	CW/NW/WW	80
GD-WK18-TGD01-150W	150W	302*267*36	SMD2835/3030	CW/NW/WW	80
GD-WK18-TGD01-200W	200W	362*322*36	SMD2835/3030	CW/NW/WW	80

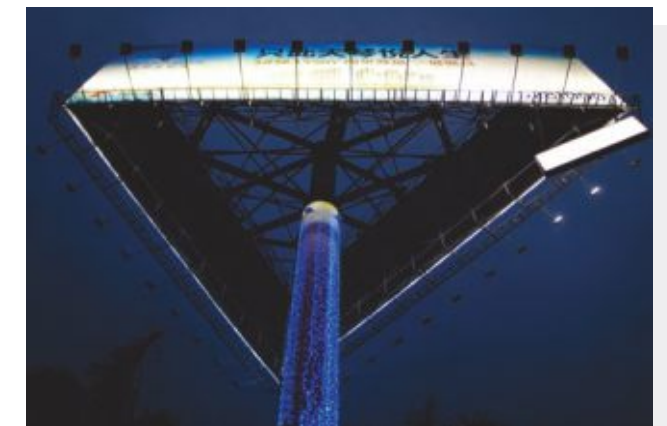
### LED Flood Light

Material: Diecast Aluminium, Tempered-glass

LED Driver: Linear

Input Voltage: AC175-265V 50/60Hz

Warranty: 2 Years

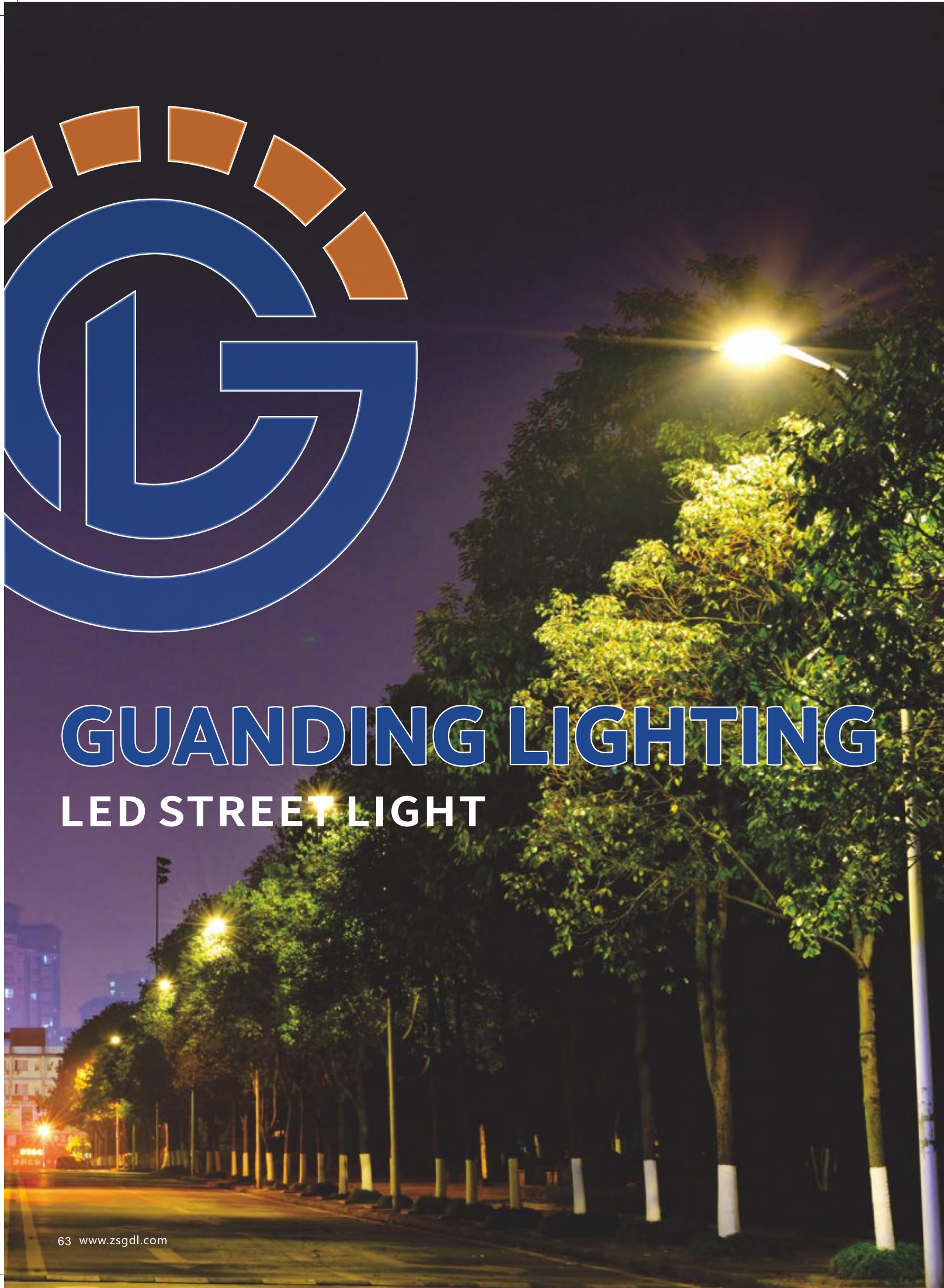


## GD-WK06-02

SANAN/BRIDGELUX

MODEL	WATT	SIZE	CHIPS	CCT	CRI
GD-WK06-02-10W	10W	80*70*20	SMD2835/3030	CW/NW/WW	70
GD-WK06-02-20W	20W	95*80*20	SMD2835/3030	CW/NW/WW	70
GD-WK06-02-30W	30W	110*90*20	SMD2835/3030	CW/NW/WW	70
GD-WK06-02-50W	50W	160*120*20	SMD2835/3030	CW/NW/WW	70
GD-WK06-02-100W	100W	200*166*20	SMD2835/3030	CW/NW/WW	70
GD-WK06-02-150W	150W	240*195*20	SMD2835/3030	CW/NW/WW	70
GD-WK06-02-200W	200W	270*235*20	SMD2835/3030	CW/NW/WW	70
GD-WK06-02-300W	300W	310*260*25	SMD2835/3030	CW/NW/WW	70
GD-WK06-02-400W	400W	340*300*25	SMD2835/3030	CW/NW/WW	70





**LED STREET LIGHT**

Material:Diecast Aluminium  
LED Driver:Isolated Constant Current driver  
Input Voltage:AC85-265V,50/60Hz  
Warranty:2 Years or 3 years



**GD-WK01-BJ**

**MOSO<sup>®</sup>** 

**inventronics**

**SANAN/BRIDGELUX**

MODEL	WATT	SIZE	CHIPS	CCT	CRI	LUMEN	IP Rank
GD-SKU-50W	50w	500*230*80mm	SMD/COB	CW/NW/WW	80	100lm/w	65
GD-SKU-100W	100w	620*260*80mm	SMD/COB	CW/NW/WW	80	100lm/w	65
GD-SKU-150W	150w	720*280*80mm	SMD/COB	CW/NW/WW	80	100lm/w	65
GD-SKU-200W	200w	860*320*80mm	SMD/COB	CW/NW/WW	80	100lm/w	65
GD-SKU-250W	250w	1100*335*80mm	SMD/COB	CW/NW/WW	80	100lm/w	65



**LED STREET LIGHT**

Material:Diecast Aluminium  
LED Driver:Isolated Constant Current driver  
Input Voltage:AC85-265V,50/60Hz  
Warranty:2 Years or 3 years



**GD-ST**

MODEL	WATT	SIZE	CHIPS	CCT	CRI	LUMEN	IP Rank
GD-SKU-50W	50w	410*200*82mm	SMD2835/3030	CW/NW/WW	80	120lm/w	65
GD-SKU-100W	100w	545*230*86mm	SMD2835/3030	CW/NW/WW	80	120lm/w	65
GD-SKU-150W	150w	610*253*88mm	SMD2835/3030	CW/NW/WW	80	120lm/w	65
GD-SKU-200W	200w	660*265*89mm	SMD2835/3030	CW/NW/WW	80	120lm/w	65

**MOSO<sup>®</sup>**   
**inventronics**  
**SANAN/BRIDGELUX**

**LED STREET LIGHT**

Material:Diecast Aluminium  
LED Driver:Isolated Constant Current driver  
Input Voltage:AC85-265V,50/60Hz  
Warranty:2 Years or 3 years



**GD-SZ**

MODEL	WATT	SIZE	CHIPS	CCT	CRI	LUMEN	IP Rank
GD-SZ-20W	20w	285*112*33mm	SMD2835/3030	CW/NW/WW	80	120lm/w	65
GD-SZ-30W	30w	300*123*40mm	SMD2835/3030	CW/NW/WW	80	120lm/w	65
GD-SZ-50W	50w	398*139*50mm	SMD2835/3030	CW/NW/WW	80	120lm/w	65
GD-SZ-100W	100w	525*183*52mm	SMD2835/3030	CW/NW/WW	80	120lm/w	65
GD-SZ-150W	150w	625*188*50mm	SMD2835/3030	CW/NW/WW	80	120lm/w	65
GD-SZ-200W	200w	650*220*50mm	SMD2835/3030	CW/NW/WW	80	120lm/w	65

**MOSO<sup>®</sup>**   
**inventronics**  
**SANAN/BRIDGELUX**



## LED STREET LIGHT

Material:Diecast Aluminium  
 LED Driver: Constant Current driver  
 Input Voltage:AC175-265V,50/60Hz  
 Warranty:2 Years



## GD-WK09-DL01

SANAN/BRIDGELUX

MODEL	WATT	SIZE	CHIPS	CCT	CRI	LUMEN	IP Rank
GD-WK09-LD01-30W	30W	430*65*55	SMD2835/3030	CW/NW/WW	80	100lm/w	66
GD-WK09-LD01-50W	50W	505*67*55	SMD2835/3030	CW/NW/WW	80	100lm/w	66
GD-WK09-LD01-100W	100W	595*78*55	SMD2835/3030	CW/NW/WW	80	100lm/w	66

## LED STREET LIGHT

Material:Diecast Aluminium  
 LED Driver: DOB  
 Input Voltage:AC175-265V,50/60Hz  
 Warranty:2 Years



## GD-WK12-BD02

SANAN/BRIDGELUX

MODEL	WATT	SIZE	CHIPS	CCT	CRI	LUMEN	IP Rank
GD-WK12-BD02-50W	50W	126*385*25	SMD2835/3030	CW/NW/WW	80	100lm/w	66
GD-WK12-BD02-100W	100W	138*447*25	SMD2835/3030	CW/NW/WW	80	100lm/w	66
GD-WK12-BD02-150W	150W	174*517*25	SMD2835/3030	CW/NW/WW	80	100lm/w	66
GD-WK12-BD02-200W	200W	201*630*25	SMD2835/3030	CW/NW/WW	80	100lm/w	66

**LED STREET LIGHT**

Material:Diecast Aluminium  
LED Driver: Constant Current driver  
Input Voltage:AC 85-265V,50/60Hz  
Warranty:2 Years



**GD-WK01-KMSD**

SANAN/BRIDGELUX

MODEL	WATT	SIZE	CHIPS	CCT	CRI	LUMEN	IP Rank
GD-WK01-KMSD-50W	50W	410*120*55	SMD2835/3030	CW/NW/WW	80	100lm/w	66
GD-WK01-KMSD-100W	100W	475*140*65	SMD2835/3030	CW/NW/WW	80	100lm/w	66
GD-WK01-KMSD-150W	150W	585*160*75	SMD2835/3030	CW/NW/WW	80	100lm/w	66
GD-WK01-KMSD-200W	200W	685*175*75	SMD2835/3030	CW/NW/WW	80	100lm/w	66

**LED STREET LIGHT**

Material:Diecast Aluminium  
LED Driver: DOB  
Input Voltage:AC175-265V,50/60Hz  
Warranty:2 Years



**GD-WK12-BD03**

SANAN/BRIDGELUX

MODEL	WATT	SIZE	CHIPS	CCT	CRI	LUMEN	IP Rank
GD-WK12-BD03-50W	50W	445*113*75	SMD2835/3030	CW/NW/WW	80	100lm/w	66
GD-WK12-BD03-100W	100W	500*128*75	SMD2835/3030	CW/NW/WW	80	100lm/w	66
GD-WK12-BD03-150W	150W	565*164*75	SMD2835/3030	CW/NW/WW	80	100lm/w	66
GD-WK12-BD03-200W	200W	685*196*75	SMD2835/3030	CW/NW/WW	80	100lm/w	66



**LED STREET LIGHT**

Material:Diecast Aluminium  
LED Driver:DOB  
Input Voltage: AC175-265V,50/60Hz  
Warranty:2 Years



**GD-WK07-SL01**

SANAN/BRIDGELUX

MODEL	WATT	SIZE	CHIPS	CCT	CRI	LUMEN	IP Rank
GD-WK07-SL01-50W	50W	460.7*131.4*73.3	SMD2835/3030	CW/NW/WW	80	100lm/w	66
GD-WK07-SL01-100W	100W	520.7*146.4*73.3	SMD2835/3030	CW/NW/WW	80	100lm/w	66
GD-WK07-SL01-150W	150W	580.7*166.5*73.3	SMD2835/3030	CW/NW/WW	80	100lm/w	66
GD-WK07-SL01-200W	200W	655.7*196.4*73.3	SMD2835/3030	CW/NW/WW	80	100lm/w	66

**LED STREET LIGHT**

Material:Diecast Aluminium,Tempered-glass  
LED Driver:Constant Current driver  
Input Voltage: AC175-265V,50/60Hz  
Warranty:2 Years



**GD-WK14-WG01**

SANAN/BRIDGELUX

MODEL	WATT	SIZE	CHIPS	CCT	CRI	LUMEN	IP Rank
GD-WK14-WG01-100W	100W	380*105*30	SMD2835/3030	CW/NW/WW	80	100lm/w	67
GD-WK14-WG01-150W	150W	430*120*30	SMD2835/3030	CW/NW/WW	80	100lm/w	67
GD-WK14-WG01-200W	200W	490*135*30	SMD2835/3030	CW/NW/WW	80	100lm/w	67
GD-WK14-WG01-300W	300W	580*150*30	SMD2835/3030	CW/NW/WW	80	100lm/w	67

**LED STREET LIGHT**

Material:Diecast Aluminium  
LED Driver:DOB  
Input Voltage: AC175-265V,50/60Hz  
Warranty:2 Years



**LED STREET LIGHT**

Material:Diecast Aluminium,Tempered-glass  
LED Driver: DOB  
Input Voltage: AC175-265V,50/60Hz  
Warranty:2 Years



**GD-WK20-LD03**

SANAN/BRIDGELUX

MODEL	WATT	SIZE	CHIPS	CCT	CRI
GD-WK20-LD03-50W	50W	385*160*60	SMD2835/3030	CW/NW/WW	70
GD-WK20-LD03-100W	100W	490*200*70	SMD2835/3030	CW/NW/WW	70
GD-WK20-LD03-150W	150W	545*223*75	SMD2835/3030	CW/NW/WW	70
GD-WK20-LD03-200W	200W	626*260*75	SMD2835/3030	CW/NW/WW	70
GD-WK20-LD03-300W	300W	694*298*75	SMD2835/3030	CW/NW/WW	70



**GD-WK20-LD02**

SANAN/BRIDGELUX

MODEL	WATT	SIZE	CHIPS	CCT	CRI
GD-WK20-LD02-50W	50W	466*160*80	SMD2835/3030	CW/NW/WW	70
GD-WK20-LD02-100W	100W	560*200*80	SMD2835/3030	CW/NW/WW	70
GD-WK20-LD02-150W	150W	598*223*80	SMD2835/3030	CW/NW/WW	70
GD-WK20-LD02-200W	200W	685*260*80	SMD2835/3030	CW/NW/WW	70
GD-WK20-LD02-300W	300W	763*298*80	SMD2835/3030	CW/NW/WW	70



**LED STREET LIGHT**

Material:Diecast Aluminium  
LED Driver:Isolated Constant Current driver  
Input Voltage:AC85-265V,50/60Hz  
Warranty:2 Years or 3 years



**GD-WK20-LD01**

SANAN/BRIDGELUX

MODEL	WATT	SIZE	CHIPS	CCT	CRI
GD-WK20-LD01-100W	100W	462*220*79	SMD2835/3030	CW/NW/WW	70
GD-WK20-LD01-150W	150W	550*220*79	SMD2835/3030	CW/NW/WW	70
GD-WK20-LD01-200W	200W	640*220*79	SMD2835/3030	CW/NW/WW	70

**LED STREET LIGHT**

Material:Diecast Aluminium  
LED Driver:Isolated Constant Current driver  
Input Voltage:AC85-265V,50/60Hz  
Warranty:2 Years or 3 years



**GD-WK12-JZ04**

SANAN/BRIDGELUX

MODEL	WATT	SIZE	CHIPS	CCT	CRI
GD-WK12-JZ04-30W	30W	345*112.5*60	SMD2835/3030	CW/NW/WW	80
GD-WK12-JZ04-50W	50W	402*126.5*60	SMD2835/3030	CW/NW/WW	80
GD-WK12-JZ04-100W	100W	462*141.5*66	SMD2835/3030	CW/NW/WW	80
GD-WK12-JZ04-150W	150W	532*171.5*75	SMD2835/3030	CW/NW/WW	80
GD-WK12-JZ04-200W	200W	600*193.5*85	SMD2835/3030	CW/NW/WW	80



## LED STREET LIGHT

Material: Diecast Aluminium, Tempered-glass

LED Driver: Isolated Constant Current driver

Input Voltage: AC85-265V, 50/60Hz

Warranty: 2 Years or 3 years



## GD-WK13-YM01

**MOSO®**   
**inventronics**  
SANAN/BRIDGELUX

MODEL	WATT	SIZE	CHIPS	CCT	CRI	LUMEN	IP Rank
GD-SZ-100W	100W	530*265*80mm	SMD2835/3030	CW/NW/WW	80	120lm/w	65
GD-SZ-150W	150W	632*265*80mm	SMD2835/3030	CW/NW/WW	80	120lm/w	65
GD-SZ-200W	200w	683*265*80mm	SMD2835/3030	CW/NW/WW	80	120lm/w	65
GD-SZ-250W	250w	734*265*80mm	SMD2835/3030	CW/NW/WW	80	120lm/w	65



**GD-SL1**

**MOSO®**   
**inventronics**  
SANAN/BRIDGELUX



**GD-SL2**

**MOSO®**   
**inventronics**  
SANAN/BRIDGELUX



**GD-MZ-1**



SANAN/BRIDGELUX inventronics MOSO® MW MEAN WELL

**GD-MZ-2**



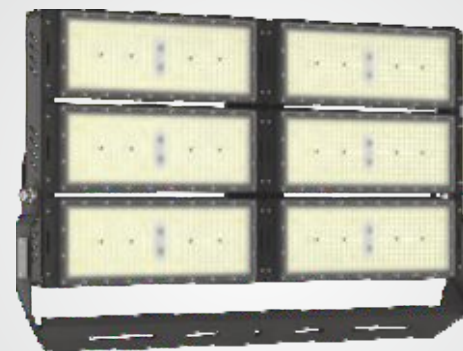
SANAN/BRIDGELUX inventronics MOSO® MW MEAN WELL

**GD-MZ-3**



SANAN/BRIDGELUX inventronics MOSO® MW MEAN WELL

**GD-MZ-4**



SANAN/BRIDGELUX inventronics MOSO® MW MEAN WELL

**GD-MZ-5**



SANAN/BRIDGELUX inventronics MOSO® MW MEAN WELL

**GD-MZ-9**



SANAN/BRIDGELUX inventronics MOSO® MW MEAN WELL

**GD-MZ-15**



MOSO® MW MEAN WELL  
inventronics  
SANAN/BRIDGELUX

**GD-ML**



MOSO® MW MEAN WELL  
inventronics  
SANAN/BRIDGELUX