

天鹅灯可调系列

SWAN LAMP
ADJUSTABLE
SERIES



玻璃扣款和压铸面框款两款可选

功率 Power	50W
铝基板 PCB	3030/13B5C/8B8C 5050/13B5C
灯体尺寸 Housing Size	53.5x21x11cm
电池盒尺寸 Box Size	17x15x5cm
外箱尺寸 Packing Size	57x27x15.5cm
箱数 Carton	1个/箱



玻璃扣款和压铸面框款两款可选

功率 Power	100W
铝基板 PCB	3030/22B5C/14B8C 5050/22B5C
灯体尺寸 Housing Size	60.5x26.5x11cm
电池盒尺寸 Box Size	23.5x16x5.5cm
外箱尺寸 Packing Size	64x32x15.5cm
箱数 Carton	1个/箱



玻璃扣款和压铸面框款两款可选

功率 Power	150W
铝基板 PCB	3030/36B5C/23B8C 5050/36B5C
灯体尺寸 Housing Size	71x26.5x11cm
电池盒尺寸 Box Size	23.5x16x5.5cm
外箱尺寸 Packing Size	74x32x15.5cm
箱数 Carton	1个/箱



玻璃扣款和压铸面框款两款可选

功率 Power	200W
铝基板 PCB	3030/43B5C/27B8C 5050/43B5C
灯体尺寸 Housing Size	76x28x11cm
电池盒尺寸 Box Size	25x16x5.5cm
外箱尺寸 Packing Size	79x35x15.5cm
箱数 Carton	1个/箱

天鹅灯可调细节图

SWAN LAMP
ADJUSTABLE
DETAIL DRAWING

寓意：追求高质量！
Moral: Pursue high quality!

喷涂工艺：采用阿克苏粉末！
Spraying process: use Aksu powder!

灯体后盖

Rear cover of lamp body

适配名牌驱动电源

ADAPTS famous driver power supply

高导热铝基板，
快速散热，光衰更小

High thermal conductivity
aluminum substrate,
rapid heat dissipation,
less light decay

可选装感应器

Optional sensor

可调节套筒

Adjustable sleeve

防水螺丝

Waterproof screw

硅胶防水胶圈
耐UV，久用不发黄

Silicone waterproof rubber ring,
UV resistance, long use without yellowing

5050/3030灯珠，成品光效高达150lm/w

5050/3030 lamp beads, finished light effect up to 150lm/w

进口PC材料，抗UV，不发黄

Imported PC material, anti UV, no yellowing

反光片

Reflectors

透镜胶圈

The lens aprons

钢化玻璃

Toughened glass

天鹅灯不可调系列 | SWAN LAMP
NON-ADJUSTABLE
SERIES



玻璃扣款和压铸面框款两款可选

功率 Power	50W
铝基板 PCB	3030/13B5C/8B8C 5050/13B5C
灯体尺寸 Housing Size	51x21x9cm
电池盒尺寸 Box Size	17x15x5cm
外箱尺寸 Packing Size	55x27x15.5cm
箱数 Carton	1个/箱



玻璃扣款和压铸面框款两款可选

功率 Power	100W
铝基板 PCB	3030/22B5C/14B8C 5050/22B5C
灯体尺寸 Housing Size	58x26.5x9cm
电池盒尺寸 Box Size	23.5x16x5.5cm
外箱尺寸 Packing Size	62x32x15.5cm
箱数 Carton	1个/箱



玻璃扣款和压铸面框款两款可选

功率 Power	150W
铝基板 PCB	3030/36B5C/23B8C 5050/36B5C
灯体尺寸 Housing Size	68.5x26.5x9cm
电池盒尺寸 Box Size	23.5x16x5.5cm
外箱尺寸 Packing Size	72x32x15.5cm
箱数 Carton	1个/箱



玻璃扣款和压铸面框款两款可选

功率 Power	200W
铝基板 PCB	3030/43B5C/27B8C 5050/43B5C
灯体尺寸 Housing Size	73.5x28x9cm
电池盒尺寸 Box Size	25x16x5.5cm
外箱尺寸 Packing Size	77x35x15.5cm
箱数 Carton	1个/箱

天鹅灯不可调细节图 | SWAN LAMP
NON-ADJUSTABLE
DETAIL DRAWING

寓意：追求高质量！
Moral: Pursue high quality!

喷涂工艺：采用阿克苏粉末！
Spraying process: use Aksu powder!



灯体后盖
Rear cover of lamp body

可选装感应器
Optional sensor

适配名牌驱动电源
ADAPTS famous driver power supply

断电开关x1
Line socket x1

高导热铝基板，
快速散热，光衰更小
High thermal conductivity
aluminum substrate,
rapid heat dissipation,
less light decay

防水螺丝
Waterproof screw

硅胶防水胶圈
耐UV，久用不发黄
Silicone waterproof rubber ring,
UV resistance, long use without yellowing

5050/3030灯珠，成品光效高达150lm/w
5050/3030 lamp beads, finished light effect up to 150lm/w

进口PC材料，抗UV，不发黄
Imported PC material, anti UV, no yellowing

反光片
Reflectors

钢化玻璃
Toughened glass

压铸面框
Die cast face frame

追量灯2号系列

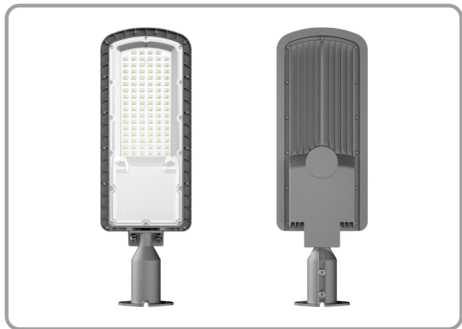
ZHUILIANG
LAMP NO.2
SERIES



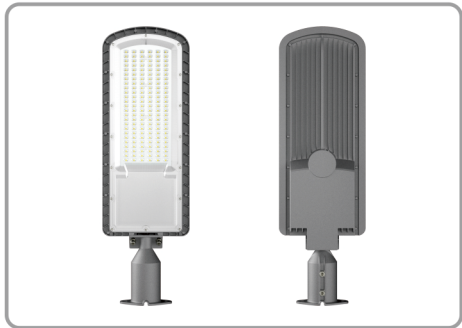
国家专利保护产品



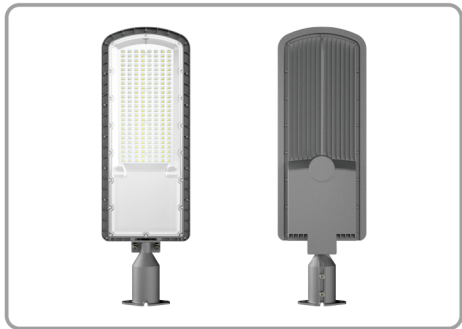
功率 Power	50W
铝基板 PCB	3030/10B5C/2B25C
灯体尺寸 Housing Size	49.3x17x7cm
电池盒尺寸 Box Size	10.5x9x4.5cm
外箱尺寸 Packing Size	47x36.5x51.5cm
箱数 Carton	10个/箱



功率 Power	100W
铝基板 PCB	3030/10B5Cx2/4B25C
灯体尺寸 Housing Size	57.5x19x7cm
电池盒尺寸 Box Size	12.5x10x4.5cm
外箱尺寸 Packing Size	47x40.5x59.5cm
箱数 Carton	10个/箱



功率 Power	150W
铝基板 PCB	3030/10B5Cx3/6B25C
灯体尺寸 Housing Size	66.5x21x8cm
电池盒尺寸 Box Size	14x12x5cm
外箱尺寸 Packing Size	47x22.5x68.5cm
箱数 Carton	5个/箱



功率 Power	200W
铝基板 PCB	3030/10B5Cx4/8B25C
灯体尺寸 Housing Size	71.5x23x8cm
电池盒尺寸 Box Size	16x15x5cm
外箱尺寸 Packing Size	47x24.5x73.5cm
箱数 Carton	5个/箱



功率 Power	300W
铝基板 PCB	3030/10B5Cx6
灯体尺寸 Housing Size	78x25x8cm
电池盒尺寸 Box Size	18x16x5.8cm
外箱尺寸 Packing Size	43.5x26x82.5cm
箱数 Carton	5个/箱

追量灯2号细节图

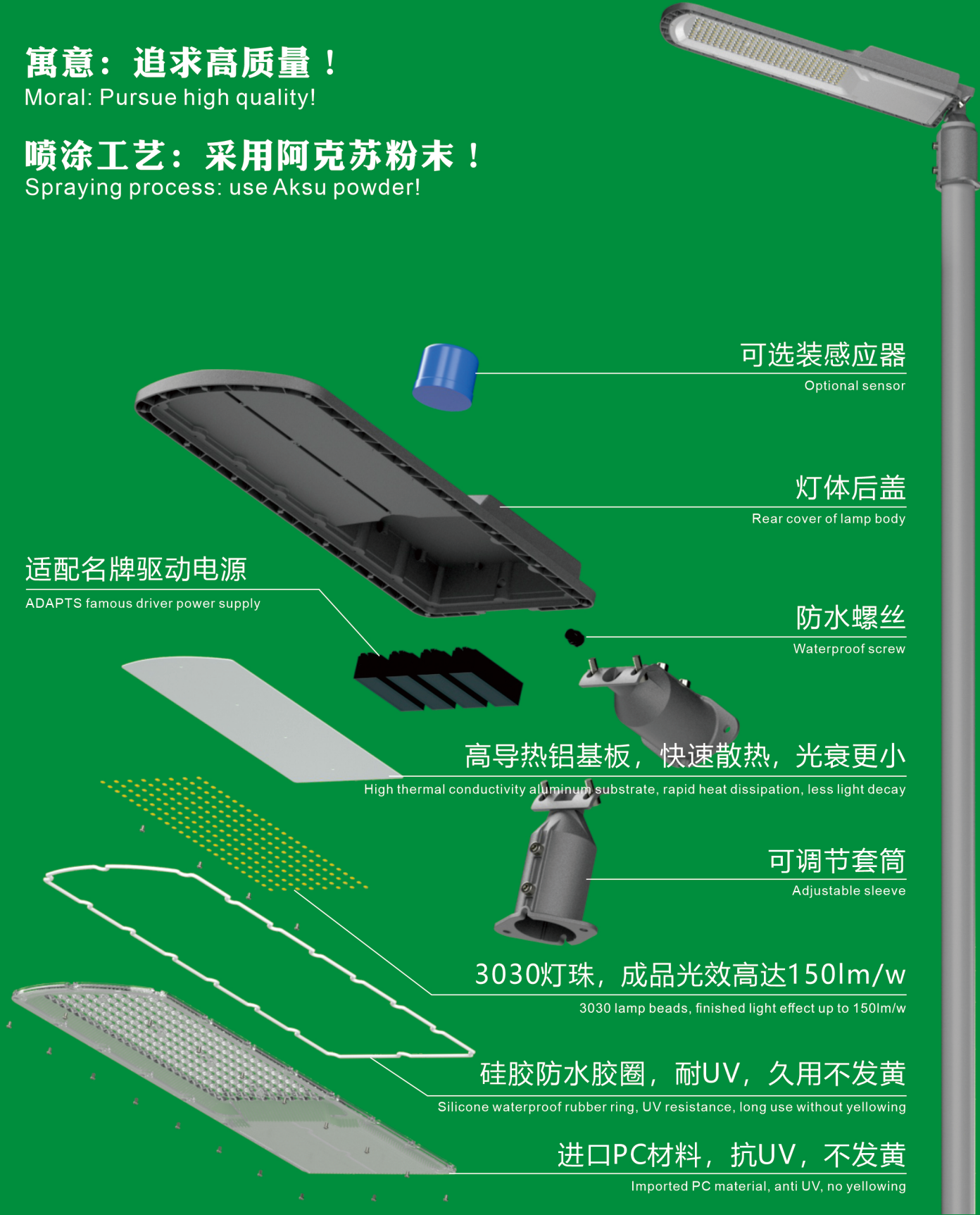
ZHUILIANG
LAMP NO.2
DETAIL DRAWING

寓意：追求高质量！

Moral: Pursue high quality!

喷涂工艺：采用阿克苏粉末！

Spraying process: use Aksu powder!





国家专利保护产品



功率 Power	50W
铝基板 PCB	3030/10B5C/2B25C
灯体尺寸 Housing Size	41.5x17x7cm
电池盒尺寸 Box Size	10.5x9x4.5cm
外箱尺寸 Packing Size	40.5x36.5x44cm
箱数 Carton	10个/箱



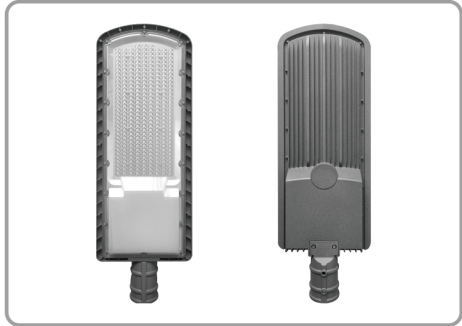
功率 Power	100W
铝基板 PCB	3030/10B5Cx2/4B25C
灯体尺寸 Housing Size	49.5x19x7cm
电池盒尺寸 Box Size	12.5x10x4.5cm
外箱尺寸 Packing Size	40.5x40.5x52cm
箱数 Carton	10个/箱



功率 Power	150W
铝基板 PCB	3030/10B5Cx3/6B25C
灯体尺寸 Housing Size	59.5x21x8cm
电池盒尺寸 Box Size	14x12x5cm
外箱尺寸 Packing Size	47x22.5x62cm
箱数 Carton	5个/箱



功率 Power	200W
铝基板 PCB	3030/10B5Cx4/8B25C
灯体尺寸 Housing Size	64.5x23x8cm
电池盒尺寸 Box Size	16x15x5cm
外箱尺寸 Packing Size	47x24.5x67cm
箱数 Carton	5个/箱



功率 Power	300W
铝基板 PCB	3030/10B5Cx6
灯体尺寸 Housing Size	73x25x8cm
电池盒尺寸 Box Size	18x16x5.8cm
外箱尺寸 Packing Size	44.5x26x75cm
箱数 Carton	5个/箱

寓意：追求高质量！
Moral: Pursue high quality!

喷涂工艺：采用阿克苏粉末！
Spraying process: use Aksu powder!

适配名牌驱动电源
ADAPTS famous driver power supply

灯体后盖
Rear cover of lamp body

高导热铝基板
快速散热，光衰更小
High thermal conductivity aluminum substrate,
rapid heat dissipation, less light decay

3030灯珠，成品光效高达150lm/w
3030 lamp beads, finished light effect up to 150lm/w

硅胶防水胶圈
耐UV，久用不发黄
Silicone waterproof rubber ring,
UV resistance, long use without yellowing

进口PC材料，抗UV，不发黄
Imported PC material, anti UV, no yellowing



功率 Power	100W
铝基板 PCB	3030/22B5C/14B8C 5050/22B5C
灯体尺寸 Housing Size	53x26.5x8cm
电池盒尺寸 Box Size	22x12x5.5cm
外箱尺寸 Packing Size	56.5x32.5x14cm
箱数 Carton	1个/箱



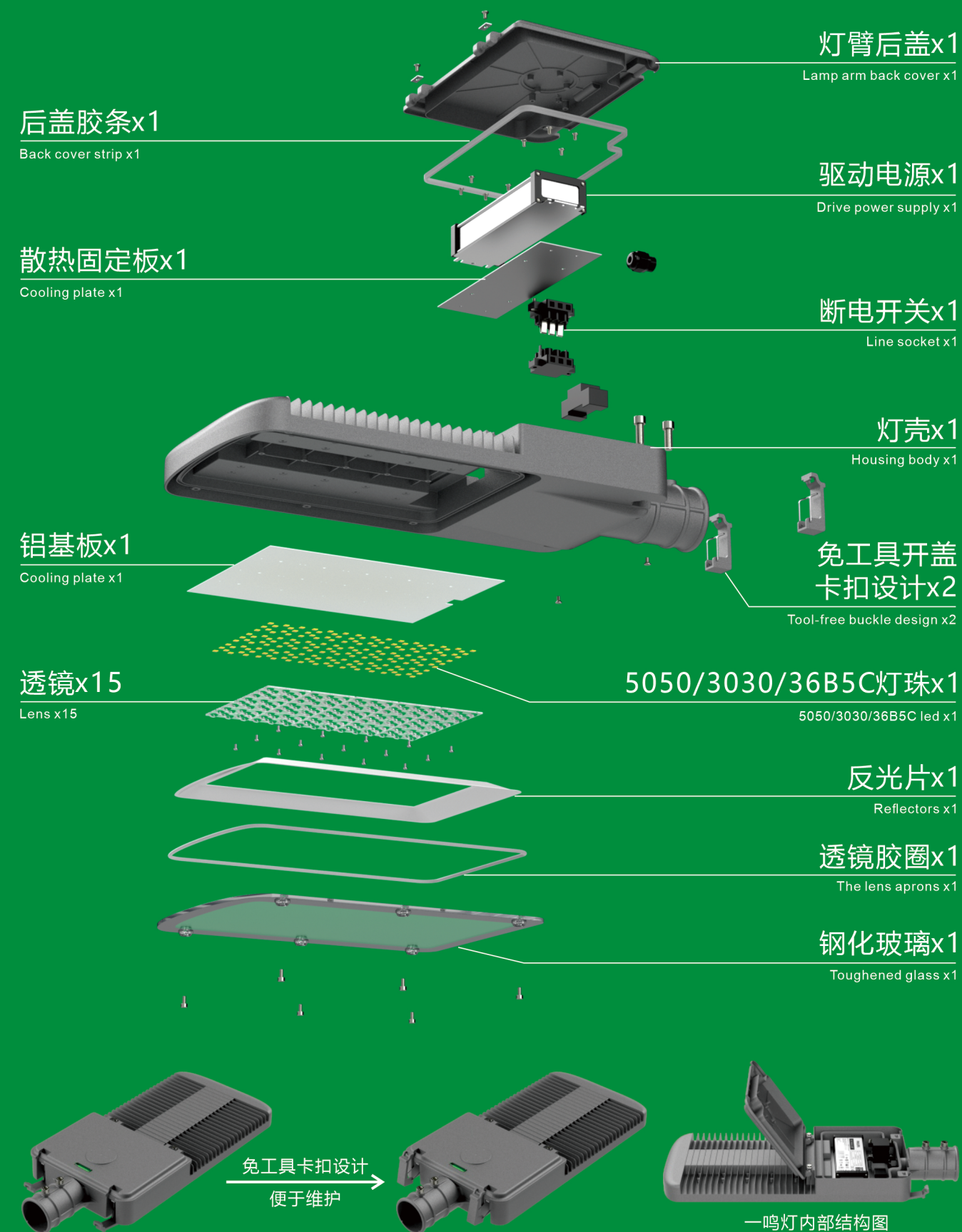
功率 Power	150W
铝基板 PCB	3030/36B5C/23B8C 5050/36B5C
灯体尺寸 Housing Size	63.5x26.5x8cm
电池盒尺寸 Box Size	22x12x5.5cm
外箱尺寸 Packing Size	66.5x32.5x14cm
箱数 Carton	1个/箱



功率 Power	200W
铝基板 PCB	3030/43B5C/27B8C 5050/43B5C
灯体尺寸 Housing Size	68.5x26.5x8cm
电池盒尺寸 Box Size	22x12x5.5cm
外箱尺寸 Packing Size	76.5x32.5x14cm
箱数 Carton	1个/箱



功率 Power	250W
铝基板 PCB	5050/3030/50B5C
灯体尺寸 Housing Size	73.5x26.5x8cm
电池盒尺寸 Box Size	22x12x5.5cm
外箱尺寸 Packing Size	86.5x32.5x14cm
箱数 Carton	1个/箱





功率 Power	60W
铝基板 PCB	3030/12B5C/60B1C
灯体尺寸 Housing Size	61x23x8cm
电池盒尺寸 Box Size	18.8x13.6x6cm
外箱尺寸 Packing Size	65.5x30.5x10cm
箱数 Carton	1个/箱



功率 Power	100W
铝基板 PCB	3030/20B5C/100B1C
灯体尺寸 Housing Size	74.7x28x8cm
电池盒尺寸 Box Size	21.8x16.9x6cm
外箱尺寸 Packing Size	79.5x35.5x10cm
箱数 Carton	1个/箱



功率 Power	200W
铝基板 PCB	3030/20B5Cx2/100B1C
灯体尺寸 Housing Size	104.5x39x9.5cm
电池盒尺寸 Box Size	32.9x21.5x7.5cm
外箱尺寸 Packing Size	109x48.5x11.5cm
箱数 Carton	1个/箱

太阳能板x1
The solar panels x1

固定太阳能板
卡扣x14
Fixed card buckle x14

灯体x1
The lamp body x1

铝基板x2
Aluminum plate x2

泡沫胶圈x1
Foam rubber ring x1

太阳能电池x1
Solar cell x1

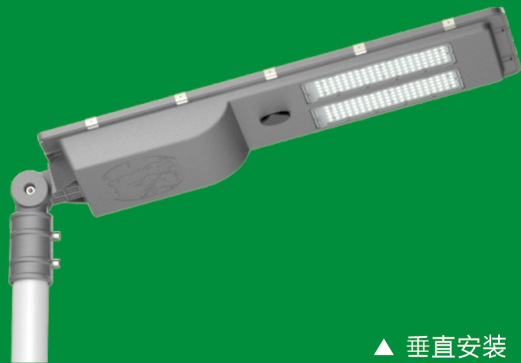
感应器x1
Sensors x1

可调套筒x1
The adjustable sleeve x1

3030/10B5Cx2/100B1C灯珠x2
3030/10B5Cx2/100B1C led x2

透镜胶圈x2
The lens aprons x2

透镜x2
Lens x2



▲ 垂直安装



▲ 水平安装

军刀灯系列 | SABER LAMP SERIES



功率 Power	50W/60W	100W/150W
铝基板 PCB	3030/5050/10B5C/50B1C 3030/5050/12B5C/60B1C	3030/20B5C/100B1C 3030/30B5C/150B1C
灯体尺寸 Housing Size	50x21x8.5cm	
电池盒尺寸 Box Size	16.5x16.5x7.5cm	
外箱尺寸 Packing Size	49.5x22.5x54.5cm	
箱数 Carton	5个/箱	



功率 Power	100W/120W/200W
铝基板 PCB	5050/100B1C/10B5Cx2 3030/120B1C/24B5C/200B1C/40B5C
灯体尺寸 Housing Size	55x22.5x9cm
电池盒尺寸 Box Size	21x17x8.5cm
外箱尺寸 Packing Size	51.5x24.5x57.5cm
箱数 Carton	4个/箱



功率 Power	150W
铝基板 PCB	3030/5050/150B1C/30B5C
灯体尺寸 Housing Size	60x24.5x9cm
电池盒尺寸 Box Size	22x17x8.5cm
外箱尺寸 Packing Size	61x27.5x12cm
箱数 Carton	1个/箱

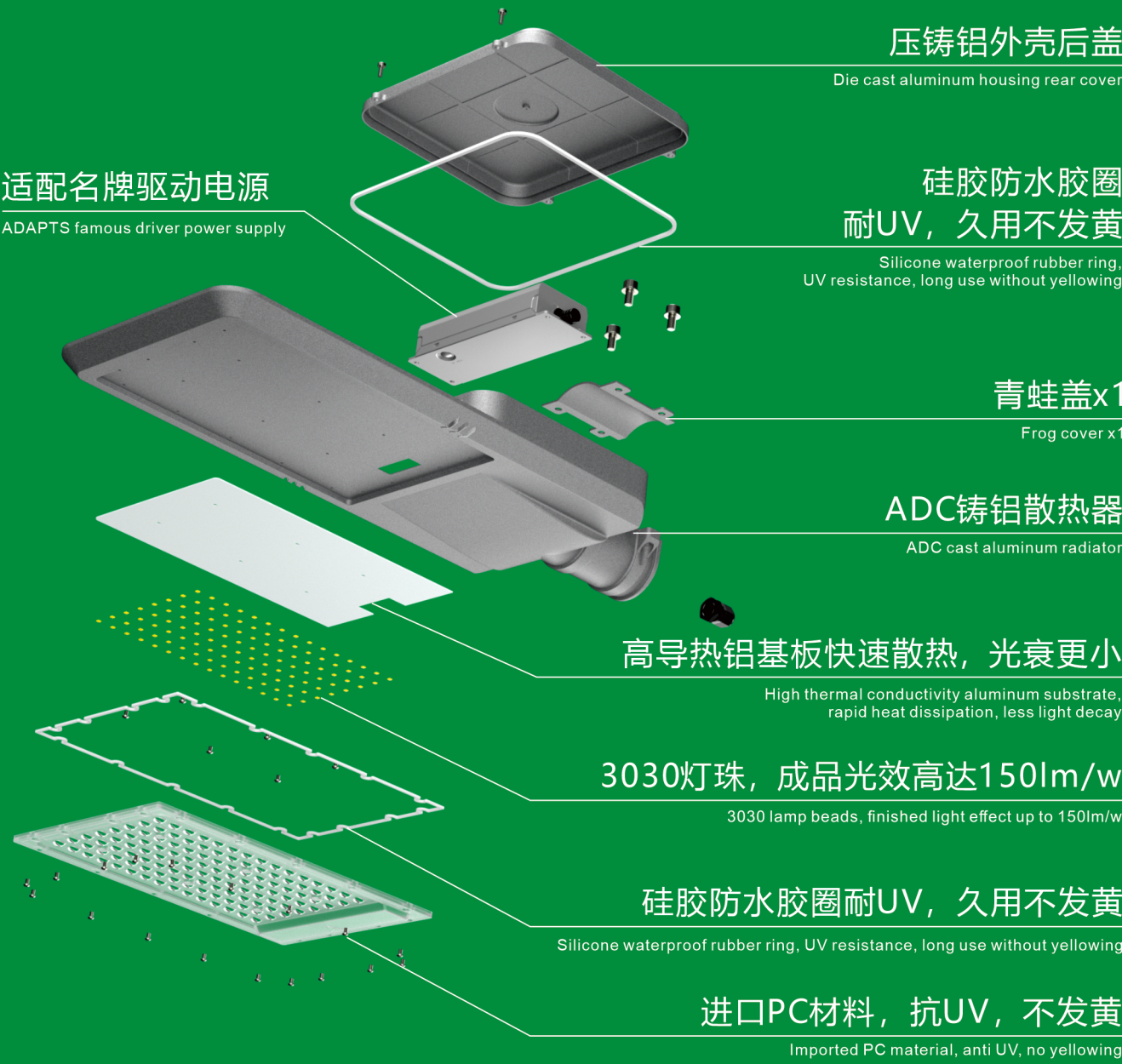


功率 Power	200W
铝基板 PCB	3030/40B5C 5050/40B5C/200B1C
灯体尺寸 Housing Size	66x26.7x9.5cm
电池盒尺寸 Box Size	23.5x17x8cm
外箱尺寸 Packing Size	66.5x27x10.5cm
箱数 Carton	1个/箱



功率 Power	300W
铝基板 PCB	3030/5050/60B5C/300B1C
灯体尺寸 Housing Size	79x26.4x8.4cm
电池盒尺寸 Box Size	23.5x17x8cm
外箱尺寸 Packing Size	80x27x11cm
箱数 Carton	1个/箱

军刀灯细节图 | SABER LAMP DETAIL DRAWING





功率 Power	50W
铝基板 PCB	3030/11B5C/8B7C/6B5C/10B5C 5050/30B1C/15B2C/6B5C/10B5C
灯体尺寸 Housing Size	41.7x26.5x8cm
电池盒尺寸 Box Size	21x20x5.5cm
外箱尺寸 Packing Size	43.5x27.5x8.5cm
箱数 Carton	1个/箱



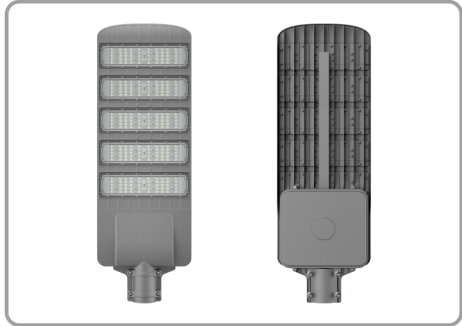
功率 Power	100W
铝基板 PCB	3030/11B5C/8B7C/6B5C/10B5C 5050/30B1C/15B2C/6B5C/10B5C
灯体尺寸 Housing Size	50.7x26.5x8cm
电池盒尺寸 Box Size	21x20x5.5cm
外箱尺寸 Packing Size	52.5x27.5x8.5cm
箱数 Carton	1个/箱



功率 Power	150W
铝基板 PCB	3030/11B5C/8B7C/6B5C/10B5C 5050/30B1C/15B2C/6B5C/10B5C
灯体尺寸 Housing Size	59.7x26.5x8cm
电池盒尺寸 Box Size	21x20x5.5cm
外箱尺寸 Packing Size	61.5x27.5x8.5cm
箱数 Carton	1个/箱



功率 Power	200W
铝基板 PCB	3030/11B5C/8B7C/6B5C/10B5C 5050/30B1C/15B2C/6B5C/10B5C
灯体尺寸 Housing Size	68.7x26.5x8cm
电池盒尺寸 Box Size	21x20x5.5cm
外箱尺寸 Packing Size	70.5x27.5x8.5cm
箱数 Carton	1个/箱



功率 Power	250W
铝基板 PCB	3030/11B5C/8B7C/6B5C/10B5C 5050/30B1C/15B2C/6B5C/10B5C
灯体尺寸 Housing Size	77.7x26.5x8cm
电池盒尺寸 Box Size	21x20x5.5cm
外箱尺寸 Packing Size	79.5x27.5x8.5cm
箱数 Carton	1个/箱

可选装感应器x1

Optional sensor x1

灯臂后盖x1

Lamp arm back cover x1

后盖胶条x1

Back cover strip x1

灯臂前盖x1

Arm front cover x1

铝基板x4

Cooling plate x4

驱动电源x1

Drive power supply x1

青蛙盖x1

Frog cover x1

LED灯珠

LED line socket

透镜胶圈x4

The lens aprons x4

透镜x4

Lens x4

矮后盖

驱动电源

市电款 ▶

高后盖

太阳能电池

太阳能款 ▶

鸣鸿灯2代系列

MINGHONG LAMP
2 GENERATION
SERIES



功率 Power	50W
铝基板 PCB	3030/11B5C/8B7C/6B5C 5050/30B1C/15B2C/6B5C
灯体尺寸 Housing Size	44.8x27x9cm
电池盒尺寸 Box Size	25x16.5x6cm
外箱尺寸 Packing Size	49.5x31.5x12cm
箱数 Carton	1个/箱



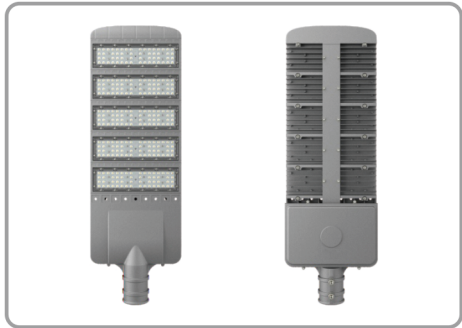
功率 Power	100W
铝基板 PCB	3030/11B5C/8B7C/6B5C 5050/30B1C/15B2C/6B5C
灯体尺寸 Housing Size	53.8x27x9cm
电池盒尺寸 Box Size	25x16.5x6cm
外箱尺寸 Packing Size	58.5x31.5x12cm
箱数 Carton	1个/箱



功率 Power	150W
铝基板 PCB	3030/11B5C/8B7C/6B5C 5050/30B1C/15B2C/6B5C
灯体尺寸 Housing Size	62.8x27x9cm
电池盒尺寸 Box Size	25x16.5x6cm
外箱尺寸 Packing Size	67.5x31.5x12cm
箱数 Carton	1个/箱



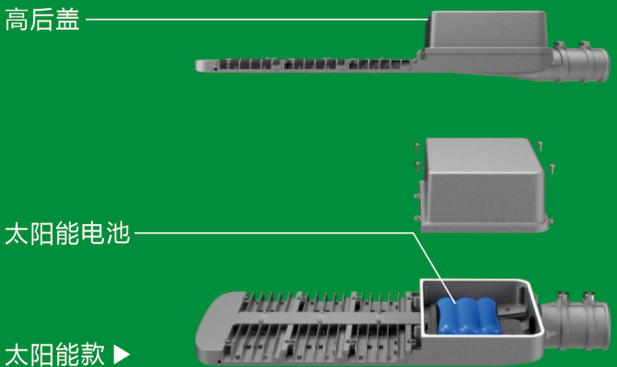
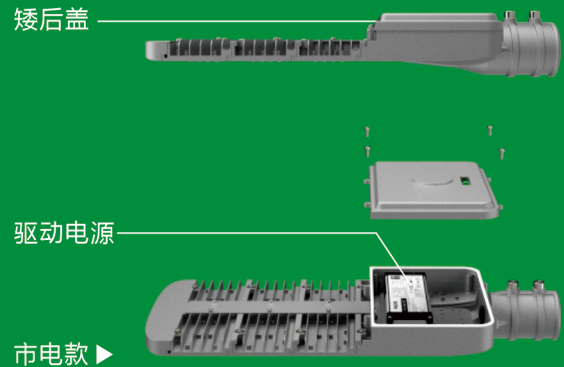
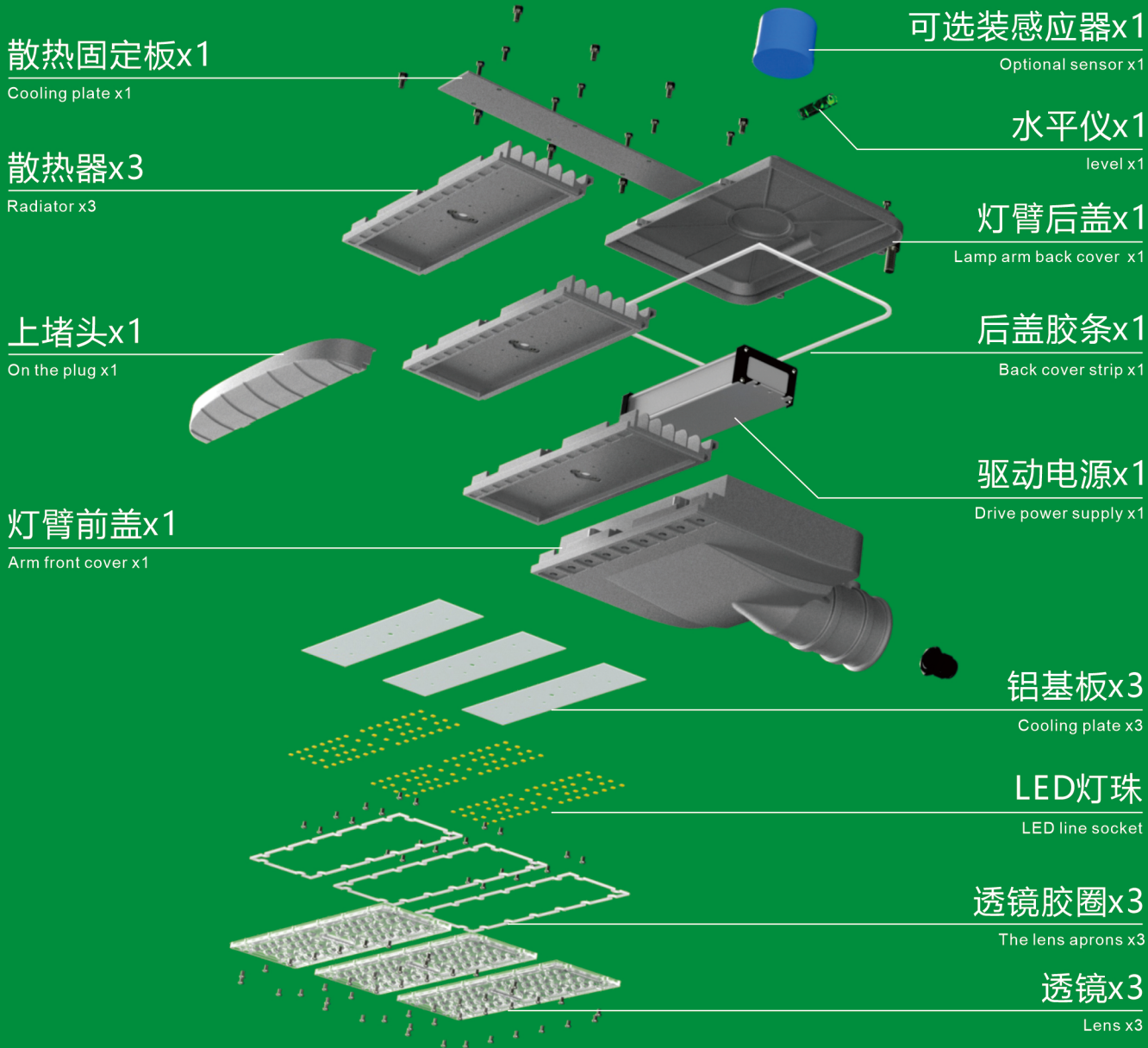
功率 Power	200W
铝基板 PCB	3030/11B5C/8B7C/6B5C 5050/30B1C/15B2C/6B5C
灯体尺寸 Housing Size	71.8x27x9cm
电池盒尺寸 Box Size	25x16.5x6cm
外箱尺寸 Packing Size	76.5x31.5x12cm
箱数 Carton	1个/箱



功率 Power	250W
铝基板 PCB	3030/11B5C/8B7C/6B5C 5050/30B1C/15B2C/6B5C
灯体尺寸 Housing Size	80.8x27x9cm
电池盒尺寸 Box Size	25x16.5x6cm
外箱尺寸 Packing Size	85.5x31.5x12cm
箱数 Carton	1个/箱

鸣鸿灯2代细节图

MINGHONG LAMP
2 GENERATION
DETAIL DRAWING



鸣鸿灯可调系列

MINGHONG LAMP
ADJUSTABLE
SERIES



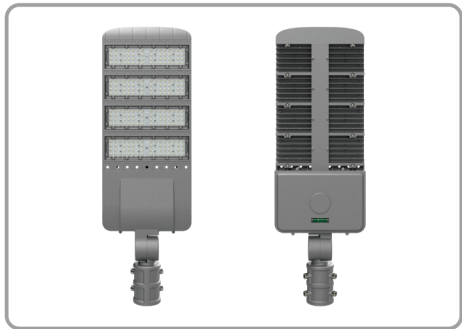
功率 Power	50W
铝基板 PCB	3030/11B5C/8B7C/6B5C 5050/30B1C/15B2C/6B5C
灯体尺寸 Housing Size	55x27x9cm
电池盒尺寸 Box Size	25x16.5x6cm
外箱尺寸 Packing Size	60x31.5x12cm
箱数 Carton	1个/箱



功率 Power	100W
铝基板 PCB	3030/11B5C/8B7C/6B5C 5050/30B1C/15B2C/6B5C
灯体尺寸 Housing Size	64x27x9cm
电池盒尺寸 Box Size	25x16.5x6cm
外箱尺寸 Packing Size	69x31.5x12cm
箱数 Carton	1个/箱



功率 Power	150W
铝基板 PCB	3030/11B5C/8B7C/6B5C 5050/30B1C/15B2C/6B5C
灯体尺寸 Housing Size	73x27x9cm
电池盒尺寸 Box Size	25x16.5x6cm
外箱尺寸 Packing Size	78x31.5x12cm
箱数 Carton	1个/箱



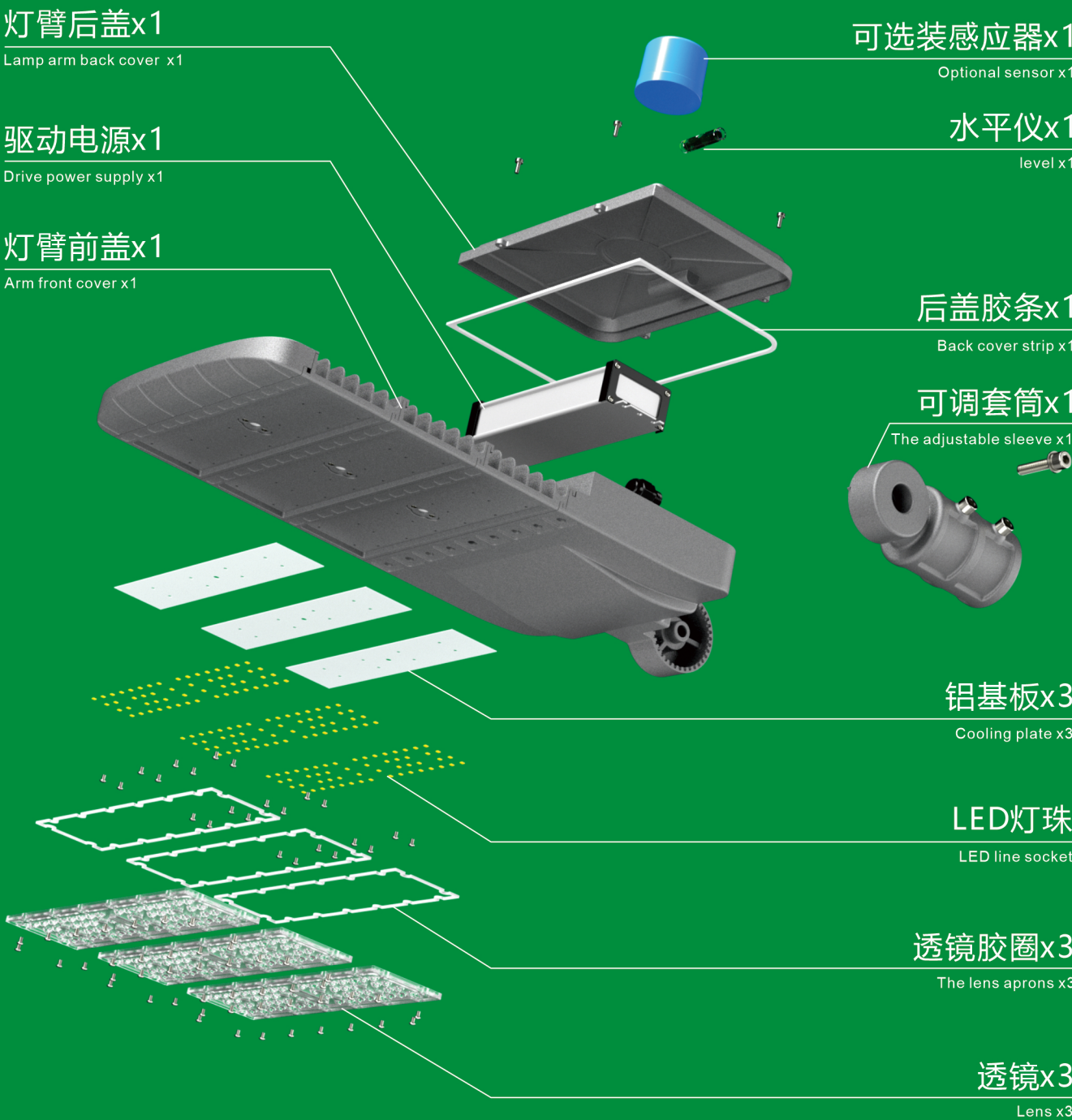
功率 Power	200W
铝基板 PCB	3030/11B5C/8B7C/6B5C 5050/30B1C/15B2C/6B5C
灯体尺寸 Housing Size	82x27x9cm
电池盒尺寸 Box Size	25x16.5x6cm
外箱尺寸 Packing Size	87x31.5x12cm
箱数 Carton	1个/箱



功率 Power	250W
铝基板 PCB	3030/11B5C/8B7C/6B5C 5050/30B1C/15B2C/6B5C
灯体尺寸 Housing Size	91x27x9cm
电池盒尺寸 Box Size	25x16.5x6cm
外箱尺寸 Packing Size	96x31.5x12cm
箱数 Carton	1个/箱

鸣鸿灯可调细节图

MINGHONG LAMP
ADJUSTABLE
DETAIL DRAWING





功率 Power	30W
铝基板 PCB	3030/7B5C
灯体尺寸 Housing Size	31x12.5x5cm
电池盒尺寸 Box Size	10.5x4.5x4cm
外箱尺寸 Packing Size	54x33x33.5cm
箱数 Carton	20个/箱



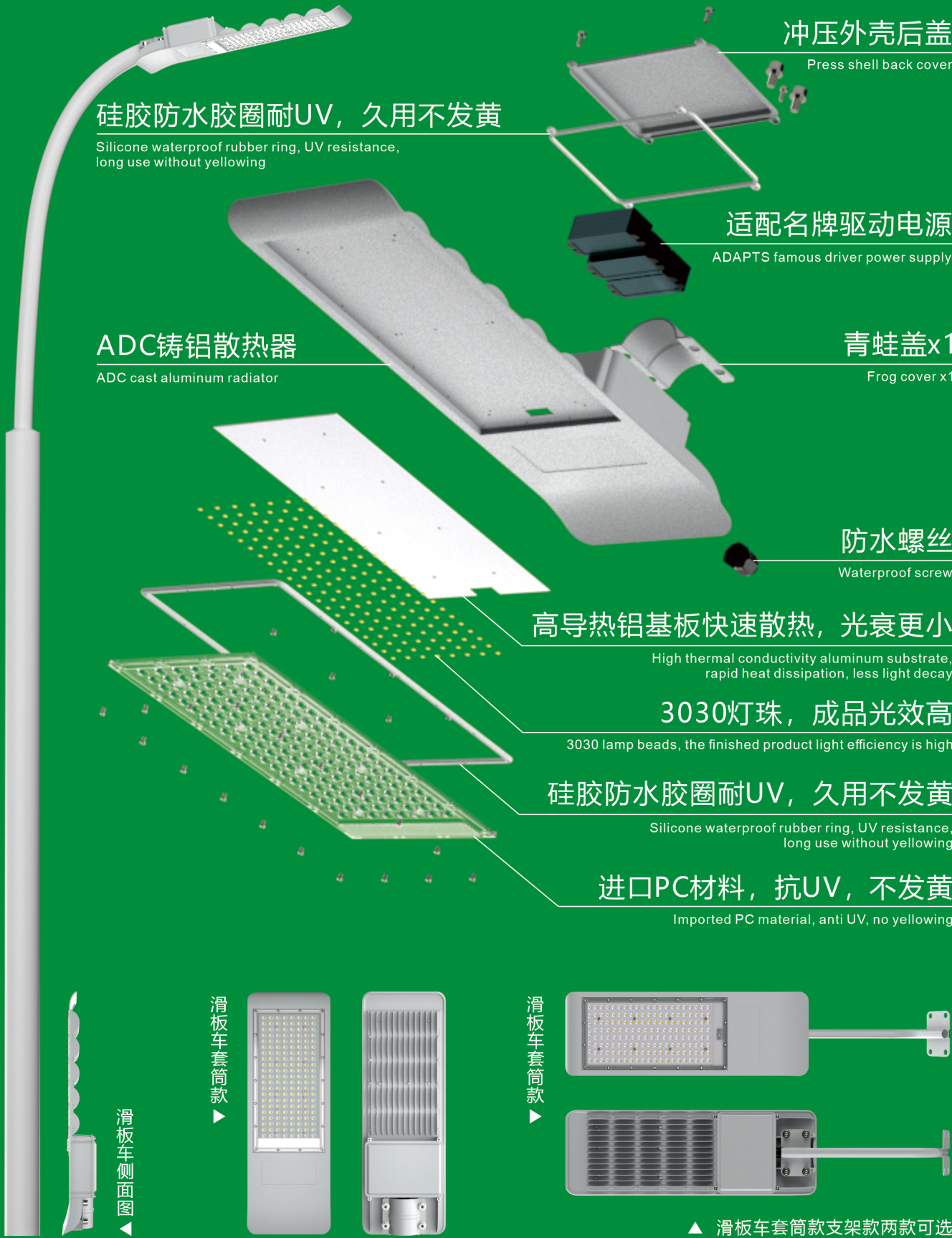
功率 Power	50W
铝基板 PCB	3030/11B5C
灯体尺寸 Housing Size	34.5x14x5cm
电池盒尺寸 Box Size	12x5.4x4.2cm
外箱尺寸 Packing Size	60.5x35x36.5cm
箱数 Carton	20个/箱



功率 Power	100W
铝基板 PCB	3030/11B5Cx2
灯体尺寸 Housing Size	40.5x16x5.2cm
电池盒尺寸 Box Size	14x6.5x4.5cm
外箱尺寸 Packing Size	68x40x42.5cm
箱数 Carton	20个/箱



功率 Power	150W
铝基板 PCB	3030/11B5Cx3
灯体尺寸 Housing Size	52x18x5.5cm
电池盒尺寸 Box Size	15.5x8.5x5cm
外箱尺寸 Packing Size	43x38x54cm
箱数 Carton	10个/箱





功率 Power	30W
铝基板 PCB	3030/6B5C
灯体尺寸 Housing Size	32.5x11.5x5.5cm
电池盒尺寸 Box Size	11x5.5x4cm
外箱尺寸 Packing Size	51x37.5x37cm
箱数 Carton	20个/箱



功率 Power	50W
铝基板 PCB	3030/10B5C/2B25C
灯体尺寸 Housing Size	40x15x6.5cm
电池盒尺寸 Box Size	14x6.5x5cm
外箱尺寸 Packing Size	64x42x41.5cm
箱数 Carton	20个/箱



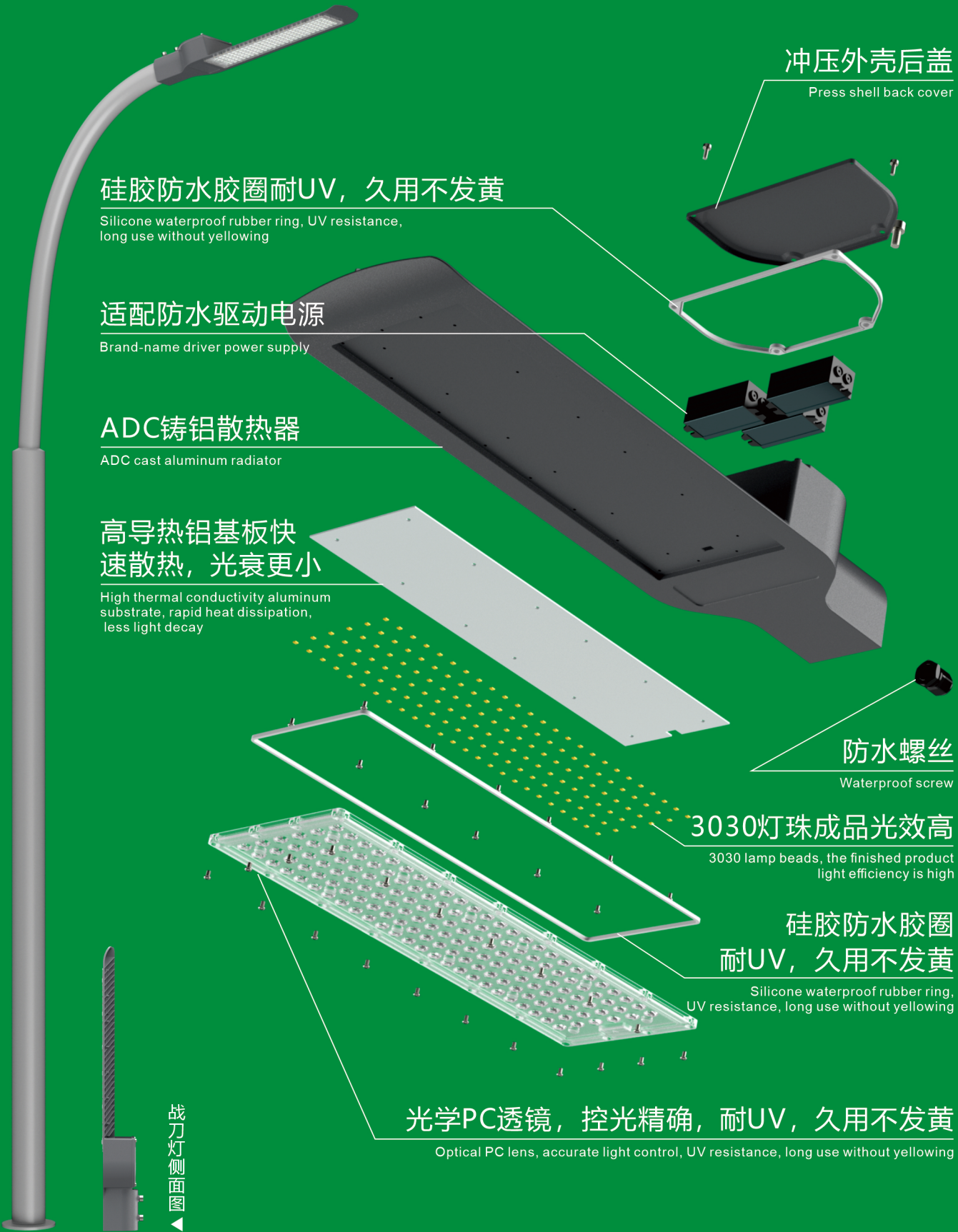
功率 Power	100W
铝基板 PCB	3030/10B5Cx2/4B25C
灯体尺寸 Housing Size	46.5x16.5x6.5cm
电池盒尺寸 Box Size	15.5x7x5cm
外箱尺寸 Packing Size	42.5x35.5x48.5cm
箱数 Carton	10个/箱



功率 Power	150W
铝基板 PCB	3030/10B5Cx3/6B25C
灯体尺寸 Housing Size	58.5x18x7.5cm
电池盒尺寸 Box Size	15.5x9x6cm
外箱尺寸 Packing Size	46.5x39x61cm
箱数 Carton	10个/箱



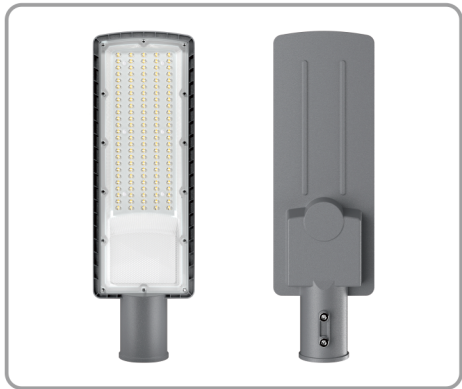
功率 Power	200W
铝基板 PCB	3030/10B5Cx4/8B25C
灯体尺寸 Housing Size	62x22x7.5cm
电池盒尺寸 Box Size	19x11x6.8cm
外箱尺寸 Packing Size	48.5x44.5x64.5cm
箱数 Carton	10个/箱



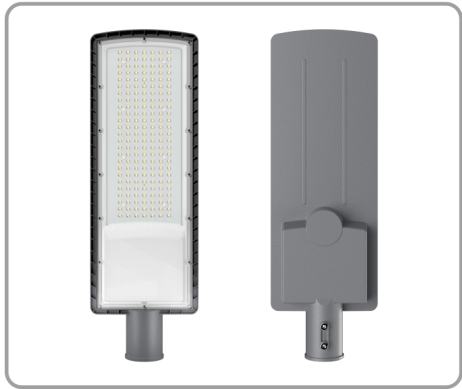
战刀3代系列 | SABER 3
SERIES



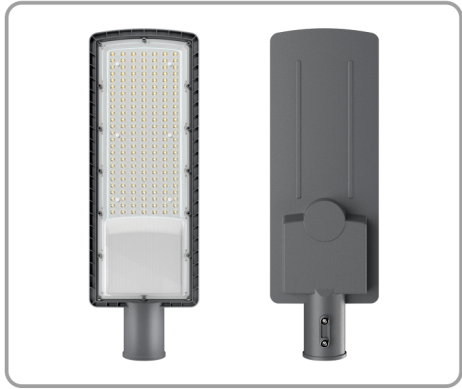
功率 Power	50W
铝基板 PCB	3030/15B5C/3B25C
灯体尺寸 Housing Size	39.5x12.5x6.2cm
电池盒尺寸 Box Size	7.5x8.2x5.2cm
外箱尺寸 Packing Size	54x40x41.5cm
箱数 Carton	20个/箱



功率 Power	100W
铝基板 PCB	3030/13B5Cx2/5B25C
灯体尺寸 Housing Size	46.5x14.5x7.3cm
电池盒尺寸 Box Size	9.5x7.3x5.6cm
外箱尺寸 Packing Size	45x31.5x48.5cm
箱数 Carton	10个/箱



功率 Power	150W
铝基板 PCB	3030/12B5Cx3/7B25C
灯体尺寸 Housing Size	53.5x16x7.3cm
电池盒尺寸 Box Size	12.5x10x5.8cm
外箱尺寸 Packing Size	45x38.5x56cm
箱数 Carton	10个/箱

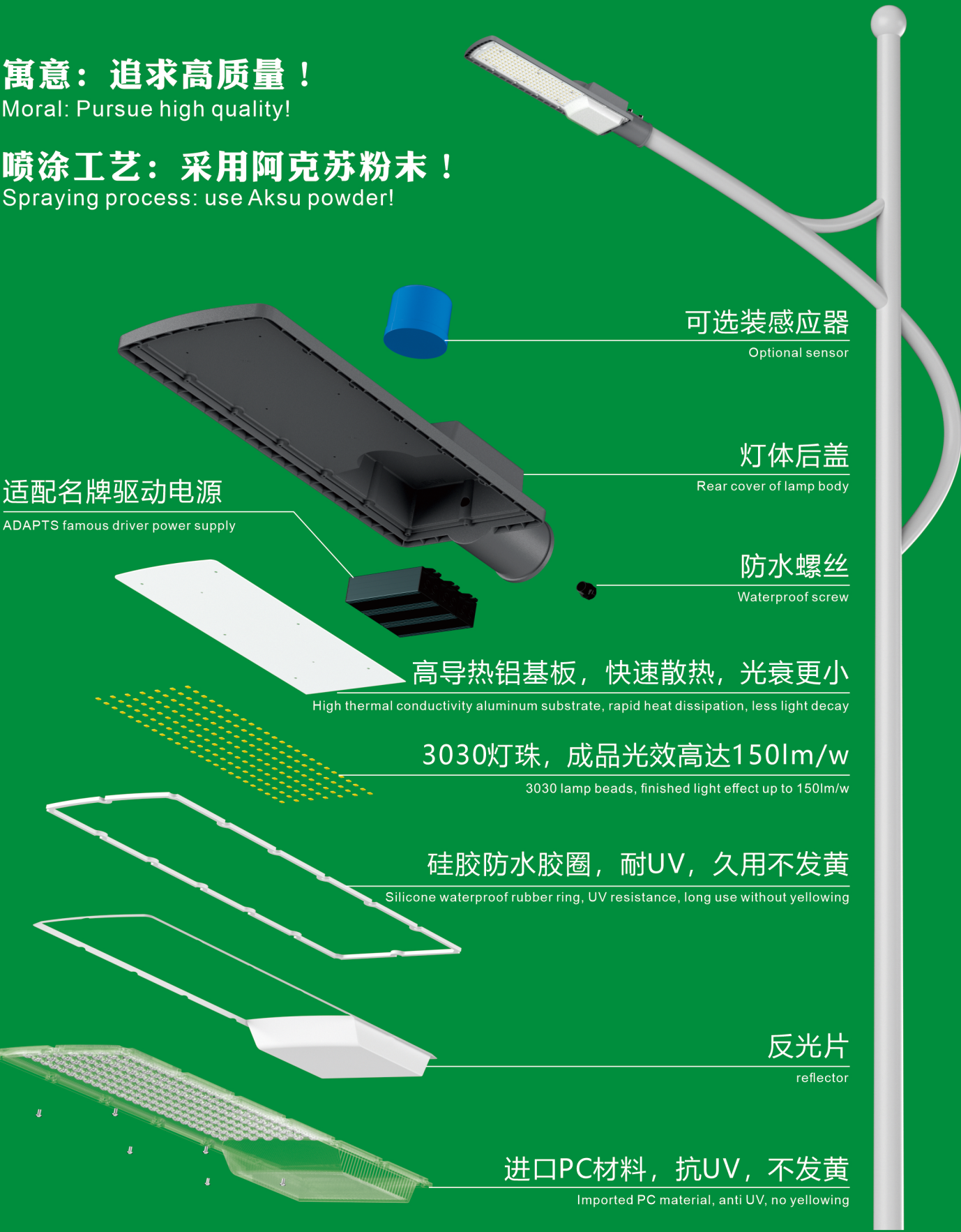


功率 Power	200W
铝基板 PCB	3030/11B5Cx4/9B25C
灯体尺寸 Housing Size	60.5x20x7.3cm
电池盒尺寸 Box Size	14.5x11.5x6.3cm
外箱尺寸 Packing Size	62.5x45x22cm
箱数 Carton	5个/箱

战刀3代细节图 | SABER 3 DETAIL
DRAWING

寓意：追求高质量！
Moral: Pursue high quality!

喷涂工艺：采用阿克苏粉末！
Spraying process: use Aksu powder!





功率 Power	50W/60W/100W
铝基板 PCB	3030/50B1C/10B5C/60B1C 12B5C/100B1C/20B5C 5050/8B5C/40B1C/12B5C/60B1C
灯体尺寸 Housing Size	50x20.5x8cm
电池盒尺寸 Box Size	19x12x7.5cm
外箱尺寸 Packing Size	49.5x22.5x54.5cm
箱数 Carton	5个/箱



功率 Power	薄料100W
铝基板 PCB	3030/5050/100B1C/20B5C
灯体尺寸 Housing Size	58x23x8.5cm
电池盒尺寸 Box Size	22x14x7.5cm
外箱尺寸 Packing Size	49x24x60.5cm
箱数 Carton	5个/箱



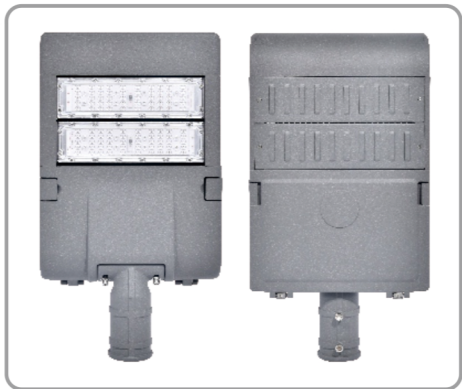
功率 Power	100W
铝基板 PCB	3030/5050/100B1C/20B5C
灯体尺寸 Housing Size	60x26.5x10cm
电池盒尺寸 Box Size	25x14x8cm
外箱尺寸 Packing Size	61x27.5x12cm
箱数 Carton	1个/箱



功率 Power	120W
铝基板 PCB	3030/12B5Cx2/120B1C
灯体尺寸 Housing Size	70x26.5x10cm
电池盒尺寸 Box Size	24x16x9cm
外箱尺寸 Packing Size	71x27x14cm
箱数 Carton	1个/箱



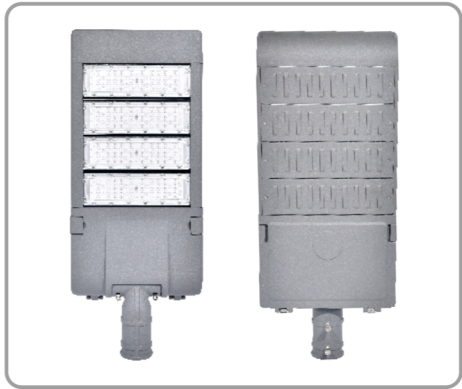
功率 Power	200W
铝基板 PCB	5050/40B5C/200B1C
灯体尺寸 Housing Size	71x26.5x10cm
电池盒尺寸 Box Size	24x16x8cm
外箱尺寸 Packing Size	71x27x14cm
箱数 Carton	1个/箱



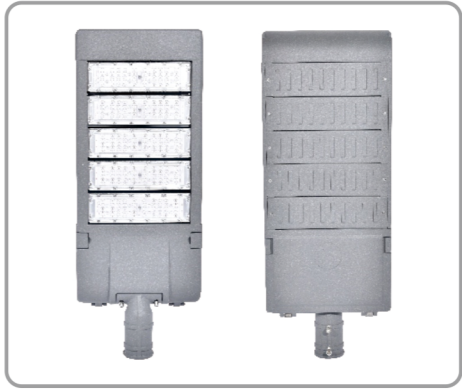
功率 Power	100W
铝基板 PCB	3030/10B5Cx2
灯体尺寸 Housing Size	57x31x8cm
电池盒尺寸 Box Size	22x14.5x5.5cm
外箱尺寸 Packing Size	62x37x13.5cm
箱数 Carton	1个/箱



功率 Power	150W
铝基板 PCB	3030/10B5Cx3
灯体尺寸 Housing Size	65x31x8cm
电池盒尺寸 Box Size	22x14.5x5.5cm
外箱尺寸 Packing Size	70x37x13.5cm
箱数 Carton	1个/箱



功率 Power	200W
铝基板 PCB	3030/10B5Cx4
灯体尺寸 Housing Size	73x31x8cm
电池盒尺寸 Box Size	22x14.5x5.5cm
外箱尺寸 Packing Size	78x37x13.5cm
箱数 Carton	1个/箱



功率 Power	250W
铝基板 PCB	3030/10B5Cx5
灯体尺寸 Housing Size	81x31x8cm
电池盒尺寸 Box Size	22x14.5x5.5cm
外箱尺寸 Packing Size	86x37x13.5cm
箱数 Carton	1个/箱